

The Curriculum at KS4

The curriculum is divided into two groups of subjects. The first group we call the **core subjects** and these are not optional, all students have to study them, even if they do not lead to a qualification.

The second group we call **foundation subjects** and we are offering students a guided choice through them.

Core Subjects

Compulsory examined subjects are:

- English Language -GCSE examined in year 11
- English Literature -GCSE examined in year 10
- Maths -GCSE examined in year 11
- Science -Combined trilogy GCSE examined in year 11, two grades awarded averaging achievement in Biology, Chemistry and Physics elements. Some students will follow the triple science pathway, which is examined in year 11 separately for Biology, Chemistry and Biology, leading to three separate GCSE grades.

Non examined compulsory subjects are

- PSHE- Personal, Social, Health and Economic education
- Core PE

Foundation Subjects

When opting for these you need to be aware that we have divided them into two groups to ensure breadth of study as encouraged by the department of education.

The first set is what we call the **Breadth Subjects**

The second set is what we call the **Creative, Technical and Applied Subjects**

The vast majority of students will be asked to choose two subjects from the **Breadth** group and two from the **Creative, Technical and Applied** group. This will ensure the broadest and most open pathway for the future.

A few students will have one less from the **Breadth** group to relieve academic pressure. These students will have bespoke courses to support their learning.

All students will be asked to choose reserves from both groups. Although we will do our best to ensure that first choices are allocated to all, we need to bear in mind that we have constraints to work with which may make that impossible. We will for instance only run groups if sufficient students choose the option.

Breadth Group

Subject
French
Spanish
Geography
History
Computer Science

Creative, Technical and Applied Group

Subject
Art
Design Technology*
Food and Nutrition
Business Studies
Engineering *
Religious Education
PE (Sports Studies / GCSE)
Music
Drama
Dance

ENGLISH LANGUAGE

WHAT WILL I GAIN FROM STUDYING ENGLISH LANGUAGE?

English provides a passport for the rest of your life and is certainly a prime requirement (with Maths) for further and higher education as well as future employment. This course will provide you with a wide range of experiences and increase your knowledge and skills. It will help you to communicate effectively, both orally and in writing, thus growing in personal confidence and self-awareness.

WHAT WILL I LEARN?

English Language students will study the following themes:

Explorations in Creative Reading and Writing
Writers Viewpoints and Perspectives

HOW WILL MY LEARNING BE ASSESSED?

All texts in the examination will be unseen prior to the exam

Explorations in Creative Reading and Writing

Paper 1 External Examination 50% of the total GCSE marks.

Section A — Reading one extract from a literary fiction text and responding to 4 questions exploring how writers write creatively for effect.

Section B — Descriptive or Narrative Writing.

Writers Viewpoints and Perspectives

Paper 2 External Examination 50% of the total GCSE marks

Section A — Reading two non-fiction texts and responding to 4 questions exploring how writers present their viewpoint in writing and comparing these techniques.

Section B — Writing to Present a Viewpoint.

HOW CAN I FIND OUT MORE?

- Talk to Miss Morris or your English teacher
- Check out the AQA website www.aqa.org.uk
- In addition, you could ask some older students studying the course

WHAT QUALIFICATION WILL I GET?

GCSE in English Language.

PROGRESSION AND POSSIBLE CAREER PATHS

ALL employers will ask about your English Language GCSE grade.

ALL colleges will take a prospective students' English Language grade into consideration. You will need to gain a grade 4 or above in order to progress to a Level 3 qualification. You will need a grade 5 or above to progress to some A level courses.

The government insists that all students who do not achieve a Grade 4 in GCSE English Language will resit it during Year 12 at college, in order to achieve a Level 2 qualification in English.

Future career paths include any profession which requires good communication skills.

ENGLISH LITERATURE

WHAT WILL I GAIN FROM STUDYING THIS COURSE?

As CS Lewis said about literature: *"you experience the lives of a thousand other people, whilst remaining yourself"*. Literature is a life skill. It provides an insight into, and an understanding of, the human condition and enables you to expand your horizons through an exploration of culture.

In teaching you about the lives of others, it helps you to understand yourself. Unlike English Language GCSE, the emphasis is NOT on spelling and punctuation, it's on your ideas and, aside from all of that, it's a really fascinating course and well respected in Higher Education!

WHAT WILL I LEARN?

The English Literature course is studied and completed in Year 10 and is divided into 2 units:-

1. Shakespeare and the 19th Century Novel
2. Modern Texts and Poetry

HOW WILL MY LEARNING BE ASSESSED?

Students will complete two examinations in the Summer term of Year 10. The examinations are as follows:

Shakespeare and the 19th Century Novel

Paper 1	Closed Book	40% of the total GCSE Marks
External Examination		
Section A – Shakespeare – Macbeth		
Section B - The 19th Century Novel – A Christmas Carol		

Modern Texts and Poetry

Paper 2	Closed Book	60% of the total GCSE Marks
External Examination		
Section A - Modern Texts – An Inspector Calls		
Section B – Poetry – Power and Conflict		
Section C - Unseen Poetry		

HOW CAN I FIND OUT MORE?

- Talk to Miss Morris or your English Teacher for more information.
- Check out the AQA website at www.aqa.org.uk
- In addition you could ask older students currently studying the course.

WHAT QUALIFICATION WILL I GET?

GCSE in English Literature.

EXPECTATIONS

Students are expected to take responsibility for their engagement in lessons and home learning. They should actively seek to extend their skills and expertise through wider reading of a range of genres and mediums. Each student is expected to develop their extended responses to texts by fully involving themselves in class and group discussions, respecting and engaging with others' ideas and building confidence in presenting personal opinions about the Literature we study. Students must meet all course deadlines.

PROGRESSION AND POSSIBLE CAREER PATHS

Possible careers directly linked to Literature are: publishing, copywriting, journalism, authoring.

MATHEMATICS

WHAT WILL I GAIN FROM STUDYING THIS COURSE?

Mathematics is a core subject in the National Curriculum that all students study to GCSE level. It is a qualification that most employers require and which is also needed for entry to further education. By studying GCSE Mathematics you will extend the knowledge you already have, study interesting new topics, learn how to apply your Mathematical knowledge and develop your capacity for logical thinking and problem solving. As well as leading you towards your GCSE Mathematics qualification, these skills will help you in your studies in other curriculum areas at school and beyond.

WHAT WILL I LEARN?

During the course you will learn topics linked to:

- Number
- Algebra
- Ratio, Proportion, Rates of Change
- Geometry and Measures
- Statistics

HOW WILL MY LEARNING BE ASSESSED?

You will be following the AQA GCSE specification. It will allow you to achieve a grade that will range from 1 to 9 across two tiers: foundation or higher.

Foundation will allow you to be awarded grades 1 to 5.

Higher will allow grades 4 to 9.

You will be examined at the end of Year 11. There will be three papers of 1 hour and 30 minutes each, one paper will be non-calculator but the others will allow you to use a calculator.

HOW CAN I FIND OUT MORE?

- Talk to Mr Simpson or ask your Mathematics teacher for more information.
- Check out the exam board AQA website.

WHAT QUALIFICATION WILL I GET?

GCSE in Mathematics.

FSMQ in Additional Maths for some students who want to stretch into A Level material.

ELC Entry Level Certificate for some who want to work towards GCSE to gain more confidence.

EXPECTATIONS

Students are encouraged to take responsibility for their own learning to enable them to make the best of the support the teacher offers. Out of lesson study is an important and necessary part of mathematical progress that has a direct bearing on a student's final GCSE grade. This includes weekly homework and revision before assessments and examinations. It is expected that students will attend lessons with the correct equipment to help them make the most of their studies.

PROGRESSION AND POSSIBLE CAREER PATHS

Mathematics GCSE is essential as the skills gained are transferable to all professions and research has shown that it is widely recognised as one of the most important of all GCSE qualifications. Students who achieve well at GCSE could consider the option of taking Maths as an A level at college. Mathematics is perhaps the most highly regarded of all Further Education courses.

Students who don't achieve a GCSE Grade 4 Mathematics will resit GCSE or Functional Maths during Yr 12 at college to achieve a Level 2 qualification in Mathematics

SCIENCE - Triple

Studying the separate sciences means students will achieve 3 Science GCSE's. They will cover more content than GCSE Combined Sciences. GCSE Biology, Chemistry and Physics will provide great preparation for A-level, T-level and Applied Science courses.

Biology

- Cell biology
 - Organisation
 - Infection and response
 - Bioenergetics
 - Homeostasis and response
 - Inheritance, variation and evolution
 - Ecology
- Plus 8 required practical's

Chemistry

- Atomic structure and the periodic table 2
 - Bonding, structure and the properties of matter
 - Quantitative chemistry
 - Chemical changes
 - Energy changes
 - The rate and extent of chemical change
 - Organic chemistry
 - Chemical analysis
 - Chemistry of the atmosphere
 - Using resources
- Plus 8 required practical's

Physics

- Forces
 - Energy
 - Waves
 - Electricity
 - Magnetism and electromagnetism
 - Particle model of matter
 - Atomic structure
 - Space physics
- Plus 8 required practical's

Exams

Each of the Separate GCSE Science Subjects will have the following;

Two papers: each paper will assess different topics.

Duration: both papers are 1 hour 45 minutes.

Tiers: Foundation and Higher.

Weighting: the papers are equally weighted. Each is worth 50% of the grade and has 100 marks available.

Question types: multiple choice, structured, closed short answer and open response.

WHAT QUALIFICATION WILL I GET?

You will receive three GCSE awards, one for each Science.

EXPECTATIONS

Students studying this course will be expected to:-

- Actively engage in learning to develop as effective learners.
- Actively participate in reviewing their own learning and improving on areas that need developing.
- Actively take part in practicals independently or with peers.
- Take responsibility for home learning activities e.g. homework or revision as these have a direct impact on GCSE outcomes.

PROGRESSION AND POSSIBLE CAREER PATHS

Taking **GCSE Triple Science** provides a strong academic foundation that opens up a wide array of progression options and career pathways, particularly in the science, technology, engineering, and mathematics (STEM) fields. It is especially beneficial if you plan to pursue science-based degrees and jobs in the future.

Successful completion of GCSE Triple Science allows progression to various Level 3 qualifications, including: A level, Applied Science courses, apprenticeships and T levels. Successful completion of triple Science develops valuable transferable skills, including critical thinking, problem-solving, analytical skills, and practical laboratory techniques, which are highly valued by employers across many sectors including healthcare, engineering and scientific research and analysis.

SCIENCE -Combined Science: Trilogy

Why Combined Science: Trilogy?

Familiar content

Students studying Combined Science: Trilogy will cover the three science disciplines (Biology, Chemistry and Physics). Combined Science: Trilogy takes a logical and coherent journey through familiar and new content.

Engaging practical's

We know that practical's are not only one of the most engaging parts of a science education but are also essential for students' understanding of scientific theory. There are 16 required practical's that students must study for the exams.

Examinations

Six papers: two biology, two chemistry and two physics. Each will assess different topics.

Duration: all the papers are 1 hour 15 minutes.

Tiers: Foundation and Higher. **Weighting:** the papers are equally weighted. Each is worth 16.7% of the grade and has 70 marks.

Question types: multiple choice, structured, closed, short answer and open response

WHAT QUALIFICATION WILL I GET?

You will receive an award worth **two GCSEs** .
You will receive a paired grade, such as 5-5 or 6-5

EXPECTATIONS

Students studying this course will be expected to:-

- Actively engage in learning to develop as effective learners.
- Actively participate in reviewing their own learning and improving on areas that need developing.
- Actively take part in practical's independently or with peers.
- Take responsibility for home learning activities e.g. homework or revision as these have a direct impact on GCSE outcomes.

PROGRESSION AND POSSIBLE CAREER PATHS

Successful completion of GCSE Trilogy Science allows progression to various Level 3 qualifications, including: A level, Applied Science courses and T levels. Successful completion of Trilogy Science develops valuable transferable skills, including critical thinking, problem-solving, analytical skills, and practical laboratory techniques, which are highly valued by employers across many sectors including healthcare, engineering and scientific research and analysis.

Summary of content

Biology

- Cell biology
- Organisation
- Infection and response
- Bioenergetics
- Homeostasis and response
- Inheritance, variation and evolution
- Ecology

Chemistry

- Atomic structure and the periodic table
- Bonding, structure, and the properties of matter
- Quantitative chemistry
- Chemical changes
- Energy changes
- The rate and extent of chemical change
- Organic chemistry
- Chemical analysis
- Chemistry of the atmosphere
- Using resources

Physics

- Forces
- Energy
- Waves
- Electricity
- Magnetism and electromagnetism
- Particle model of matter
- Atomic structure

PERSONAL DEVELOPMENT

WHAT WILL I GAIN FROM STUDYING THIS COURSE?

The Personal Development curriculum encompasses all areas of learning that promotes students' spiritual, moral, social and cultural development and helps prepare them for the opportunities, responsibilities and experiences of adult life. Extra-curricular and residential activities also make a major contribution to the personal development curriculum.

WHAT WILL I LEARN?

The Personal Development curriculum focuses upon:

- personal values and attitudes
- personal and social skills
- personal knowledge and understanding
- personal and collective responsibility

It is planned to ensure that student entitlement is delivered in terms of:

- Emotional and Physical health/drugs/relationship and sex education
- Careers and further education/vocational guidance
- Work related learning/work experience
- Personal finance

Personal Development is taught through one lesson each week

Personal Development aims to develop the students:

- personal qualities and attitudes which build upon the ethos of the college e.g. respect for self and others.
- personal skills helping them to cope with change and make healthy choices.
- rights and responsibilities to others, e.g. family, moral, legal.
- personal understanding of the world and the impact of their actions.
- preparation for transition from college to work, further education, apprenticeships.
- entrepreneurial skills
- develop the skills, knowledge and confidence to manage their money well, both now and in the future

HOW WILL MY LEARNING BE ASSESSED?

There is no formal assessment of Personal Development at Key Stage 4.

HOW CAN I FIND OUT MORE?

Talk to Mrs Jewer for more information.

WHAT QUALIFICATION WILL I GET?

There are no qualifications attached to the Personal Development programme.

EXPECTATIONS

Through a variety of learning opportunities students are expected to grow in confidence, develop a positive attitude, improve their skills, and display a willingness to contribute in lessons. Students should also develop a greater sense of wellbeing and be better prepared to develop their potential as healthy, enterprising and responsible citizens.

PROGRESSION AND POSSIBLE CAREER PATHS

Social work, Youth work, Community work and Teaching all build on the knowledge and skills acquired in Personal Development as they require employees to form relationships with people in order to help and support them in their daily lives. As an adviser, advocate, counsellor or listener, they help people to live more successfully within their local communities by helping them find solutions to their problems.

CORE PHYSICAL EDUCATION

WHAT WILL I GAIN FROM STUDYING THIS COURSE?

The Government guidelines require compulsory PE for all students to be active and to raise awareness of the importance of healthy lifestyles.

The course will provide encouragement to continue with lifelong participation in sport

WHAT WILL I LEARN?

The course offers a range of sports and activities to encourage future participation by:-

- Developing social skills, interaction and independent learning
- Learning about safe practice, health and well being
- Communicating ideas
- Thinking skills such as tactics and spatial awareness
- Movement skills and body awareness
- Developing knowledge of rules and umpiring

HOW WILL MY LEARNING BE ASSESSED?

There will be no assessed grade or qualification for CORE PE, your teachers will continue to assess you internally on your different sports and activities.

HOW CAN I FIND OUT MORE?

- Talk to Mrs Acquah, or any of the PE Teachers.

WHAT QUALIFICATION WILL I GET?

There are no qualifications attached to the Core Physical Education course

EXPECTATIONS

Students must:-

- participate regularly
- provide the correct kit and equipment
- show responsible and safe organisational skills
- participate in a range of activities with different students

PROGRESSION AND POSSIBLE CAREER PATHS

There are a range of PE related courses available at local colleges.

Career possibilities include, working in the sport and leisure industry.

GEOGRAPHY

Today's world is changing fast and this GCSE Geography course is ideally suited to give you the knowledge, skills and experience to understand and tackle these changes with confidence. Geography is a highly respected GCSE course and suited to anyone with an interest in the world around them, and an interest in the future of our planet.

Paper 1: Physical Geography (1.5hrs)

This paper covers Physical Geography such as Tectonic Hazards, Weather Hazards, Climate Change, Coasts, Rivers, Tropical Rainforests and Ecosystems. You have already started studying these topics in Year 9 Geography lessons.

Paper 2: Human Geography (1.5hrs)

This paper covers Urban Issues and Challenges, we study places like Brighton, Jamaica and Nigeria and look at the problems facing big cities such as rapid population growth and the methods we can use to help our cities become more sustainable in the future.

Paper 3: Fieldwork Paper

You will learn how to conduct fieldwork on a trip to the city of Brighton and how to answer Fieldwork questions using statistics skills.

HOW WILL MY LEARNING BE ASSESSED?

Three exams will be taken at the end of the three year course, worth 100% of the overall grade. Students will also get to attend two fieldwork trips during the course. There will also be an option to visit another country to study physical geography – currently this is a fantastic trip to Iceland.

HOW CAN I FIND OUT MORE?

- Talk to Mrs James and Mr Masson for more information.
- Check out the AQA website at www.aqa.org.uk - Syllabus AQA Geography 8035
- In addition you can ask older students studying the course, it is very popular at Bourne!

WHAT QUALIFICATION WILL I GET?

GCSE in Geography. (It is also a valued Ebac subject)

EXPECTATIONS

Students studying this course will be expected to:-

- Actively engage in learning geography to develop as effective and independent learners
- Develop knowledge and understanding of new places through engaging lessons.
- Develop and apply learning to the real world through fieldwork and other out of classroom learning.

PROGRESSION AND POSSIBLE CAREER PATHS

There is Geography in all career paths. Geography is a stepping stone to a whole range of future opportunities. You may wish to continue with this subject or study a related subject e.g.. biology, geology, environmental science, government and politics, economics, travel and tourism, leisure and recreation. Your geographical studies are particularly valued in journalism and media, law, engineering, business management, ICT, environmental management, teaching, economic planning, marketing, leisure and tourism.

HISTORY

WHY SHOULD I CHOOSE THIS COURSE?

“If you don’t know history, then you don’t know anything. You are a leaf that doesn’t know it is part of a tree” Michael Crichton (writer). This quote shows how a study of history can put the world in which we live today in the context of time. If we study what has happened in the past we can better understand what is happening in the world around us today.

A study of history also equips students with a range of skills which will benefit them in their current studies and in whatever direction their lives take them after GCSEs. Colleges, universities and employers highly value the skills they know a historian will have gained. Historians are good at thinking critically, researching and analysing information, solving problems. They have developed an ability to communicate their thoughts and ideas clearly, both verbally and with well-developed writing skills.

WHAT WILL I LEARN?

Paper 1

Thematic Study: Medicine in Britain c1250—present
Historic Environment: The British Sector of The Western Front 1914-18: injuries, treatment and the trenches

Paper 2

British Depth Study: Early Elizabethan England 1558 –88
Period Study: The American West c 1835—1895

Paper 3

Modern Depth Study: The USA 1954—75: Conflict at home and abroad
 The Civil Rights Movement
 The Vietnam war

HOW WILL MY LEARNING BE ASSESSED?

Students will sit three external examinations at the end of Year 11 worth 100% of the overall result

HOW CAN I FIND OUT MORE?

- Talk to Mrs McGarry for more information.
- See Edexcel website—www.edexcel.com/GCSEHistory16
- In addition you could ask older students studying the course.

WHAT QUALIFICATION WILL I GET?

GCSE in History.

EXPECTATIONS

- To have a genuine interest in History
- To keep class notes neat and well organised for revision
- To catch up any work missed through absence
- To attend after school intervention sessions if necessary to keep on track
- To work independently and collaboratively to analyse historical sources and undertake historical enquiry tasks
- Secure subject knowledge with regular revision and recall practice

PROGRESSION AND POSSIBLE CAREER PATHS

The skills acquired whilst studying for GCSE History are highly valued by further education establishments and employers alike. They know that these skills are useful for jobs in tourism, journalism, accountancy, for lawyers, teachers, the Police, TV researchers to name but a few. History can open up a world of opportunities and you’ll hear some fascinating stories along the way.

MODERN FOREIGN LANGUAGES

WHY SHOULD I CHOOSE THIS COURSE?

Studying a Modern Foreign Language will give you the opportunity to:

- Make you stand out by giving you a unique advantage.
- Develop your ability to communicate effectively and have a wider circle of friends.
- Develop independent learning skills.
- Access the top universities in the UK.
- Secure a better paid job (8% to 20% salary increase!)
- Travel around the world, understand different cultures and develop your social skills.
- Broaden your mind and your understanding of world issues.

WHAT WILL I LEARN?

The content is the same for Spanish and French. There are three broad themes:

· **People and Lifestyle.**

Identity and relationships with others; healthy living and lifestyle; education and work.

· **Popular culture.**

Free time activities; customs, festivals and celebrations; celebrity culture.

· **Communication and the world around us.**

Travel and tourism; media and technology; the environment and where people live.

HOW WILL MY LEARNING BE ASSESSED?

Listening, reading, and writing: All are assessed as exams in May/June

Speaking: Assessed as an exam between April and May, with your teacher.

Each skill is worth 25% of the total for the exam

HOW CAN I FIND OUT MORE?

- Talk to Mrs Riedmuller or your Languages Teacher for more information.
- Check out the AQA website at www.aqa.org.uk (Syllabus code: Spanish 8692, French 8652)
- In addition you could ask older students studying the course.

WHAT QUALIFICATION WILL I GET?

A GCSE in Spanish or French. This is a valued EBacc subject.

EXPECTATIONS

- Take responsibility for your learning and the learning of others.
- Use online vocabulary and grammar learning and revision sites such as 'Languagnut', and 'Languages online' at home to reinforce and revise what you have done in class
- Attend the revision or catch-up sessions after school if you need extra help or if you have missed important work
- Regularly complete homework

PROGRESSION AND POSSIBLE CAREER PATHS

Many students from Bourne Community College have continued with their study of a Modern Foreign Language at College or University.

Career paths having studied languages:

Diplomatic Service	Sales and Marketing	International Law
Translation	Travel and Tourism	Science and Sport
Business and IT careers	Hospitality/catering/PR	

ART & DESIGN

PAINTING

DRAWING

SCULPTURE

PHOTOGRAPHY

STENCIL ART

COLLAGE

WIRE

PRINT-MAKING

TEXTILES

WHAT WILL I GAIN FROM STUDYING THIS COURSE?

If you have enjoyed Art & Design and wish to extend your creative abilities further then this is the course for you. The course aims to develop your confidence, knowledge and understanding of artists, skills, techniques and materials through interesting and personalised projects. Within coursework units you will explore ideas and experiment with a wide range of methods.

WHAT WILL I LEARN?

How to:

- express and record personal ideas by developing skills in using both traditional methods and new media.
- investigate ideas through observation, analysis and experimentation
- analyse artists and understand the world of art, craft and design and relate it to your own work
- show good presentation skills to enhance your work
- learn independently developing self-discipline and time management skills

HOW WILL MY LEARNING BE ASSESSED?

AQA's GCSE Art and Design is made up of two components:

Component 1: 60% - Art & Design Personal Portfolio - internally set and marked, externally moderated.

Component 2: 40% - Externally Set Assignment - externally set theme, internally marked, externally moderated.

Both components are assessed using 4 Assessment Objectives:

- Develop/Investigate - Refine/Experiment
- Record/Observe - Present

Each component is assessed separately out of 96 marks.

HOW CAN I FIND OUT MORE?

- Talk to Mrs Cluff or Miss Donovan for more information.
- Check out the AQA website at www.aqa.com - Syllabus: Fine Art (Specification code 8201)
- In addition you could ask older students studying the course and look at GCSE sketchbooks and portfolios and work on display in the art-room.

WHAT QUALIFICATION WILL I GET?

GCSE in Art & Design.

EXPECTATIONS

- Commitment to, and love of the subject
- Willing to analyse, evaluate and review progress and take creative risks in your work
- Regular attendance
- Commitment to completing coursework at home to support class work
- A2 size personal portfolio (digital camera and computer would be an advantage)
- Ability to visit galleries and museums would be advantageous

PROGRESSION AND POSSIBLE CAREER PATHS

On completion of your GCSE Art and Design course you could progress to further education. Courses include BTEC Nationals in Art and Design, Specialist Diploma in Creative and Media, GCE AS Art and Design.

You could also go on to art and design related employment having a portfolio of work that will evidence your ability and show prospective employers what you know, understand and can do.

BUSINESS AND ENTERPRISE

WHY SHOULD I CHOOSE THIS COURSE?

Studying our Level 1/2 Technical Award in Business and Enterprise will give you the core skills and knowledge needed to prepare for an enterprising career and working life.

It is an ideal course to study if you have an interest in how businesses work and/or are considering going on to a Business Studies course at college or into employment.

You will benefit from an assessment pattern, which requires hard work every lesson and doesn't place all the emphasis on final exams

WHAT WILL I LEARN?

You will learn how a business is structured, who stakeholders are and why they're important, and will gain an understanding of the different areas of a business, from HR and finance to operations and marketing.

We will study 9 units of work:

Content area 1: Entrepreneurship, Business Organisation and Stakeholders

Content area 2: Market Research, Market Types and Orientation and Marketing Mix

Content area 3: Human Resource Requirements for Business and Enterprise

Content area 4: Operations management

Content area 5: Business Growth

Content area 6: Sources of enterprise funding and business finance

Content area 7: The impact of the external environment on business and enterprise

Content area 8: Business and Enterprise Planning

Non Exam Assessment (NEA): 60% of overall grade, synoptic project 21 hours

Exam Assessment (EA): 40% of overall grade, 1.5 hours written exam

HOW WILL MY LEARNING BE ASSESSED?

V Cert Technical Awards are designed to be delivered over two years. The first year of delivery is entirely dedicated to teaching and learning, with all summative assessments taking place in the final year of study. The Business and Enterprise V Cert Technical Award is assessed by Non-Exam Assessment (60%) and Examined Assessment (40%). Each Unit requires the completion of a workbook, followed by a synoptic project on real world scenarios and then a final exam. They're graded from Level 1 Pass, Merit, Distinction, to Level 2 Pass, Merit, Distinction, Distinction*, which are equivalent to GCSE grades 9-1.

HOW CAN I FIND OUT MORE?

- Talk to Ms Perry for more information.
- Visit the NCFE Business and Enterprise website.
- Talk to older students already taking the course.

WHAT QUALIFICATION WILL I GET?

V Certificate in Business and Enterprise, Which are graded from Level 1 Pass, Merit, Distinction, through to Level 2 Pass, Merit, Distinction, Distinction*, which is the equivalent to GCSE grades 9-1.

EXPECTATIONS

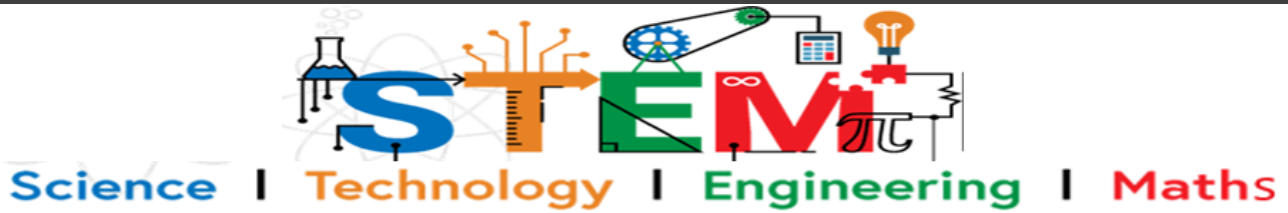
Expect to take an interest in the subject and be interested by the subject. Be prepared to think about the business world. Be prepared to investigate real businesses and organisations. Be prepared to complete assessment work every lesson with an end of content test after each content. Complete homework. Submit a synoptic project piece of coursework after 21 hours of exam conditions. Revise content throughout the two years.

PROGRESSION AND POSSIBLE CAREER PATHS

This course will provide you with a very relevant and worthwhile qualification to progress for further study: a T Level in management and administration, or a Business A Level or Applied General at college or sixth form. Apprenticeship: in business administration or as a marketing assistant.

A qualification in Business will be of value in a wide range of careers, from working in a shop, to working in a bank or helping you set up and run your own business. Most employers value business sense in their employees.

COMPUTING

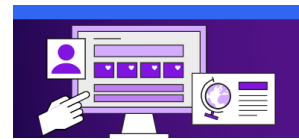


Computer Science - Edexcel

WHY SHOULD I CHOOSE THIS COURSE?

Coding is the new literacy. Industry and Education have come together to recommend that UK industry is short of skilled programmers.

The UK desperately need digital creators for the UK to continue to be a global player in tech. Coding is the new building block for the world. There are lots of intelligent, energetic young people out there but only a fraction of them are learning to code on the web. The UK has introduced coding to the curriculum to bring coding alive. The new curriculum for Computing started in 2014 and we have now delivered Computing since September 2015. The course studied is OCR—J276. GCSE

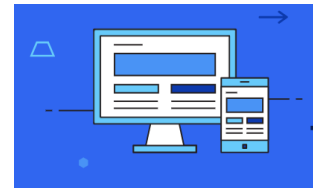


WHAT WILL I LEARN?

The Edexcel GCSE course comprises of two separate units:

- Unit 1 Computer Systems — Includes Hardware and Network Skills
- Unit 2 Computational Thinking and Programming— Logic & Programming techniques This is now a practical online assessment

Students will learn the science of computing including system memory & storage, networks, cyber security, ethical, legal, cultural and environmental issues related to computing. Students will also learn programming techniques, producing robust programs and computational logic. Students will use the practical skills to design and development programmes to complete tasks and solve problems using Python



HOW WILL MY LEARNING BE ASSESSED?

This course will be assessed using a variety of methods:

- Unit 1 External Exam Computer Systems and Programming (50%)
- Unit 2 External Exam Computational Thinking and Programming (50%)

HOW CAN I FIND OUT MORE?

Look on the Edexcel website for 1cp2 or talk to Mr Ellis .
Search for "OCR GCSE Computer Science" on the internet.

WHAT QUALIFICATION WILL I GET?

Edexcel GCSE Computer Science (9-1) Computing which will count towards the EBacc.

EXPECTATIONS

GCSE Computing requires a good level of maths and logical thinking.

PROGRESSION AND POSSIBLE CAREER PATHS

GCSE Computing will enable students to progress to A Level or BTEC Level 3 courses at colleges. From games developer, managers of IT and communications services to cyber security, computer scientist have a range of opportunities open to them.

DANCE

Students opting for Dance will also be able to choose the PE/Sport Studies course which will run alongside. Both options are separate subjects and will be taught and assessed separately.

WHY SHOULD I CHOOSE THIS COURSE?

- If you are passionate about dance and would like to develop your knowledge further.
- If you are an aspiring dancer who wants to learn how you can better your own performance.
- If you have an interest in the theory side of dance and are interested in understanding the aesthetic appreciation of dance and how various choreographers piece their work together.
- If you have a passion to perform and choreograph dances and be a part of the dance show case.
- To maintain your involvement in physical activity as part of a healthy active lifestyle.
- If you might be considering a dance course or pathway when you move onto college.

WHAT WILL I LEARN?

You will work with 3 units.

Unit 1: Exploring Dance.

You will look at the work of 3 different choreographers and recreate work in their style. You will also evaluate and analyse their choices of music, costume, lighting and movements and see how you can apply this to your own performance.

Unit 2: Developing skills and techniques.

You will work on developing your dance ability and talents, looking at various workshops and key technical elements of dance. You will also look at applying these techniques into your own work and devising pieces to suit your individual style.

Unit 3: Responding to a brief.

You will be required to contribute to a group performance. You will be given a brief to follow and you will need to create a dance piece that suits the brief given. This will include the style of dance, the techniques you need to use, the lighting, costume and staging of the piece, as well as showing off your talent and ability throughout the piece.

HOW WILL MY LEARNING BE ASSESSED?

Unit 1: A 50% mix of practical and theory work. The practical work will be creating dance pieces in the style of the choreographer for a showcase. The theory work will be a portfolio of your analysis of the choreographers work.

Unit 2: 75% practical, 25% theory. This unit will be assessed in lessons through videos of your performances and techniques over time. This will be the main part of the assessment. You will also evaluate your performance after each lesson to make up the last 25% of this unit.

Unit 3: 75% practical, 25% theory. This will be a timed assessment where you are expected to create your final piece before performing it to an audience. You will then be expected to write a log of your thoughts, ideas and evaluate your performance.

HOW CAN I FIND OUT MORE?

See Mrs Acquah in the PE office for any more information

WHAT QUALIFICATION WILL I GET?

BTEC Qualification in Performing Arts through Dance

EXPECTATIONS

Students will be expected to buy a GCSE PE polo shirt and course booklet available from the department.

Students will be expected to wear the t-shirt on all exam practical sessions.

Regular participation is essential and expected.

A responsible attitude and a high awareness of health and safety issues at all times.

To be aware that there is a theory element involved alongside the practical

PROGRESSION AND POSSIBLE CAREER PATHS

There are numerous courses available at local colleges including dance and performing arts. These courses are run at Havant and Southdowns College and Chichester College, as well as many others.

Career possibilities include, teaching or coaching dance, becoming a choreographer,

GCSE DESIGN TECHNOLOGY

WHY SHOULD I CHOOSE THIS COURSE?

Design Technology provides students with opportunities to design and make products in plastic, wood, concrete and metal. In Design Technology students learn to combine practical skills with an understanding of core theory including new and emerging technologies, energy, modern and smart materials, systems, mechanisms and materials. You need to be creative and good at problem solving.

WHAT WILL I LEARN?

In year 10 students design and make small products to develop their design and practical skills. Projects will cover wood, plastic and metal skills as well as developing CAD/CAM skills. Students will cover most exam theory during this year too (there is theory covered every week). Examples of projects undertaken in year 10 include a living hinge container made on the laser cutter, designing a planter holder to be 3D printed, making a pizza cutter, and making an anglepoise light.

HOW WILL MY LEARNING BE ASSESSED?

Non-examined assessment (50% of GCSE) – Students will design and make a product. Design briefs are released by the exam board in June of year 10. Students must produce a 30 page portfolio in Google classroom slides to support their practical work showing their research, designing, process of making, analysing and evaluating.

Exam (50% of GCSE) – This 2 hour long exam tests students on core technical principles (new and emerging technologies, energy, modern and smart materials, systems, mechanisms and materials); students are then examined on their knowledge specifically in woods and plastics.

HOW CAN I FIND OUT MORE?

- Talk to Miss Newman or Mrs Wareham for more information.
- Check out the AQA website at www.aqa.org.uk (Syllabus 8552)

WHAT QUALIFICATION WILL I GET?

GCSE in Design Technology - (AQA 8552)

EXPECTATIONS

You must be prepared to do at least one lesson of theory every week.

You must be prepared to complete homework every week.

You must be prepared to be creative and have a go at problem solving.

You must be prepared to work hard, and be resilient to design and make high quality products.

PROGRESSION AND POSSIBLE CAREER PATHS

A Level Design Technology

BTEC Engineering

Career examples – product design, industrial design, Engineering, architecture, furniture design, interior design, theatre set design and any careers requiring creativity and problem solving skills.

DRAMA

WHY SHOULD I CHOOSE THIS COURSE?

This course is designed for those of you who are interested in all aspects of theatre, including acting, directing and devising your own work. It is designed for those who wish to develop their knowledge and understanding of different performance techniques and styles of theatre.

The study of Drama can help encourage **enthusiasm, confidence, self-esteem, conversation and social skills**. Drama lessons can stimulate students to be fully involved and motivated.

WHAT SKILLS WILL I NEED AND DEVELOP?

Experience in performing is helpful although not essential. However, you will need to have the confidence to show work to others. You will develop your acting and performance skills, studying different practitioners and styles of theatre. You will also develop your ability to analyse and interpret texts and further develop your devising skills.

WHAT WILL I LEARN?

Over the course you study many aspects of drama and theatre. Below is an outline of the course:

Devising Theatre - Research and explore a stimulus and work collaboratively to create your own devised piece of drama supported by a portfolio.

Performance from a text - Present and perform two extracts from a script to an audience.

Theatre Makers in practice - Evaluate a live theatre performance and a set text

HOW WILL MY LEARNING BE ASSESSED?

The Edexcel GCSE is comprised of 3 units.

Component 1 - **Devising Drama**
40% of total marks - Internally assessed; Marked out of 60 – Practical performance and a portfolio of 2000 words

Component 2 - **Presenting and Performing Texts**
20% of total marks — externally assessed by an examiner; Marked out of 48
To present and perform two extracts from a script to an audience.

Component 3 - **Theatre makers in practice**
40% of total marks - External exam; Marked out of 60
External exam of 1 hour and 30 minutes. Paper will be based on evaluating a live theatre performance and a set text that students will study in class.

WHAT QUALIFICATIONS WILL I GET?

GCSE Drama.

EXPECTATIONS

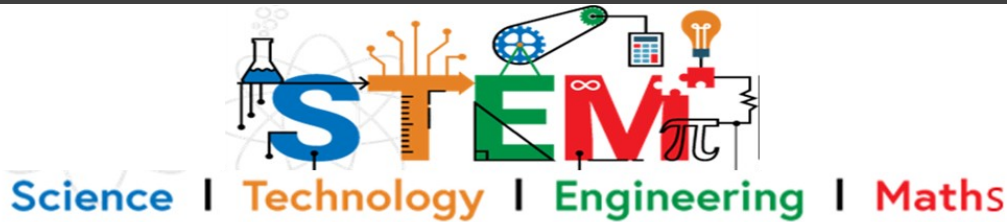
Students wishing to take Drama as a GCSE should be prepared to work after school, especially when productions are in progress. High levels of attendance are vital as members of the group depend and rely on each other during rehearsals and performances. Group work is an essential part of Drama and students should be considerate and kindly in their approaches to other drama students.

Drama does contain both theory and written work which is covered in the lesson time and supported by homework. Visits to performances will be arranged, which students need to attend in order to complete the GCSE. Although we will keep costs as low as possible, some financial commitment will be incurred.

PROGRESSION AND POSSIBLE CAREER PATHS

Students intending to pursue College or University courses will benefit from having good presentation skills. All areas of employment offer higher promotional opportunities to students who are effective presenters and have the ability to communicate with an audience. Career paths include performers, writers, directors, set designers, theatre administrators, costume design, make-up technician, lighting technicians to name but a few.

NCFE V CERT Vocational Engineering



WHAT WILL I GAIN FROM STUDYING THIS COURSE?

The UK has historically produced some of the world's best engineers.

NCFE Engineering is a GCSE equivalent Level 2 vocational qualification in Engineering and it has been designed to engage and enthuse young people with an interest in problem solving using engineering skills. If you have maths and scientific skills and want to apply this knowledge in a practical way, then this course is for you.

WHAT WILL I LEARN?

In year 10 Engineers develop their CAD/CAM skills designing and modelling an aircraft, a crane and a range of smaller products to develop skills. At the same time, students learn theory about materials and different types of Engineering. Students develop their CAD skills using 2D design and Solidworks—two really important pieces of software that you have to use every week throughout the two years.

You learn a lot about materials, testing materials, health and safety, and engineering drawings (on computer and by hand). You have to use your maths and science skills to be able to calculate equations. You will then use this knowledge to be able to complete projects such as designing and modelling a plane, or a crane.

This course is designed to give you a foundation in engineering, allowing you to select appropriate engineering at level 3.

HOW WILL MY LEARNING BE ASSESSED?

This specification is 60% coursework which is internally assessed and moderated plus a paper based exam of 40%. The exam will be sat at the end of year 11.

HOW CAN I FIND OUT MORE?

Talk to Mr Ellis, Miss Newman or Mrs Wareham
Search for "NCFE VCERT in Engineering" on the internet.

WHAT QUALIFICATION WILL I GET?

Level 2 (GCSE equivalent) VCERT vocational award in Engineering

EXPECTATIONS

You must be committed to achieving coursework deadlines and have an understanding that computer simulation (2D Design and Solidworks) and design are an inherent part of the course process for all modern Technology courses.

Applied Maths is a requirement of the course in both theoretical and practical assessment. You must be prepared to learn theory every week in lessons as well as working on projects.

PROGRESSION AND POSSIBLE CAREER PATHS

If you wish to do level 3 courses at college including Engineering or Technology you will need to prove a good basic skill level and an interest in the subject or you will have to start at level 1. This course is a good foundation for higher level courses in

GCSE FOOD PREPARATION AND NUTRITION

WHY CHOOSE THIS COURSE?

You love food: not just eating it, but creating, experimenting, and discovering new ways to make it delicious and exciting.

You're curious about food: where it comes from, how it's made, how ingredients work, and how to handle food safely.

You want to understand people and health: exploring what influences our food choices and how these decisions affect wellbeing.

A pathway to future careers: A strong foundation in food-related knowledge supports progression into a wide range of fields, including hospitality and catering, healthcare, dietetics, childcare, and sports science.

WHAT WILL I LEARN?

This course is made up of **five main topics**, each helping you understand more about food and how it affects our lives:

Food, Nutrition and Health

Food Science

Food Safety

Food Choice

Food Provenance

Throughout the course, you'll **develop practical cooking skills** and **experiment with a wide range of ingredients and techniques**. You'll get the chance to be creative in the kitchen while applying the theory you've learned.

HOW WILL I BE ASSESSED?

1. A written exam of 1 hour 45 minutes, which will assess your knowledge of the theory behind food preparation and nutrition (50%)
2. Non examination assessment which consists of two tasks, involving practical work.

Task 1: Students carry out an investigation into the scientific principles that underpin the preparation and cooking of food. This task will provide an opportunity to demonstrate your knowledge and practically apply your understanding of the science behind cooking. You'll practically investigate ingredients and explain how they work and why (15%).

Task 2: Students will plan, prepare, cook and present a 3 course menu. This task will provide you with an opportunity to showcase your creativity and cooking skills. You might make a street food menu, create delicious tapas dishes or cook up a menu for a student on a budget, depending on the briefs set (35%).

HOW CAN I FIND OUT MORE?

Talk to Miss Quinn, Mrs Harris or current Y10/Y11 students for more information.

WHAT QUALIFICATION WILL I GET?

A grade 1 to 9 GCSE in Food Preparation and Nutrition

EXPECTATIONS

There will be plenty of **hands-on practical work**, so it's important that you enjoy cooking, experimenting with a variety of dishes. You'll have the opportunity to **practise a wide range of skills** identified by the exam board.

This course also includes a **strong theory element**, where you'll explore the science, nutrition, and wider issues behind the food we eat — from how ingredients work to how food choices affect our health and the planet.

PROGRESSION AND POSSIBLE CAREER PATHS

This course will give you the skills and confidence to **cook a wide range of delicious and nutritious meals** for yourself and others. It's also a great foundation for **further study or careers** in areas such as **Food and Nutrition, Health and Social Care, Hospitality and Catering, Sports Nutrition, Food Science and Technology, Culinary Arts, Food Styling and Photography, or Public Health** — and many more!

MUSIC

WHY SHOULD I CHOOSE THIS COURSE?

If you love music and would like to develop your musical skills, especially in performing then this is the course for you. You can do this course if you play an instrument, sing or rap already or if you want to start playing an instrument, sing or rap.

WHAT WILL I LEARN?

On the Music course you will learn about yourself as a performer and about how contemporary musicians learn. You will learn how to rehearse on your own and in a group. You will perform to others regularly to improve your confidence and stage craft.

You will study a range of musical genres, learning about the history, influences and evolution of each genre. You will also learn to identify the musical elements in different songs.

HOW WILL MY LEARNING BE ASSESSED?

Most of your learning will be assessed in a practical way, either performing or giving presentations. The written work is designed to support the practical work and will include things like self-evaluations and practice diaries.

There are three units you will complete:

1. Musical Knowledge: you will research two genres of music and give a presentation. You will describe the musical features of one song.
2. Skill Development: you will choose one aspect of your performing skills to improve e.g. stage craft or playing techniques.
3. Live Performance: you will plan and perform a short set to an audience. You will complete a written evaluation your work.

HOW CAN I FIND OUT MORE?

Talk with Mrs Scott, Leader of Music. You can check out the RockSchool website.

WHAT QUALIFICATION WILL I GET?

You will get a Level 1 or 2 Tech Award for Music Practitioners graded at Distinction star, Distinction, Merit or Pass.

EXPECTATIONS

Dedication, hard work and commitment are important. You need to be prepared to perform regularly, both in class and in school showcases. You need to be willing to put in the practice time (in and out of class) so you make good progress with your skills and be encouraging of others in the class too. It is important that you can work on your own and cooperatively with other students in groups.

PROGRESSION AND POSSIBLE CAREER PATHS

Once you have your Tech Award for Music Practitioners you could continue studying music at Chichester College, South Downs, Portsmouth College or BIMM (Brighton). After this you could study music at university potentially even make a career out of music.

PHYSICAL EDUCATION / SPORTS STUDIES

Students opting for GCSE PE/Sports Studies will study one of these courses, not both. The pathway followed will be determined after the first 7 weeks of Year 10 in consultation with the PE department.

WHY SHOULD I CHOOSE THIS COURSE?

- If you are passionate about all things sport or just one sport and would like to develop your performance and understanding further.
- If you are an aspiring sportsman or sportswoman who wants to learn how you can better your own performance
- If you have an interest in the Biology side of Science or have an interest in Psychology of athletes.
- If you have a passion to coach, play or officiate in sport.
- To maintain your involvement in physical activity as part of a healthy active lifestyle
- If you might be considering a sports course when you move onto college

WHAT WILL I LEARN?

- How to play, coach and officiate different sports
- How training and healthy lifestyle improve performance
- The structure of bones and muscles and how they impact performance.

HOW WILL MY LEARNING BE ASSESSED?

GCSE PE

The course is made up of 30% practical assessment of 3 sports, 60% theory exam which consists of two written exam papers and 10% coursework.

Sport Studies

60% coursework, focusing on improving performance and Outdoor Adventurous Activities, 40% exam with one exam paper.

HOW CAN I FIND OUT MORE?

- Speak to Mrs Acquah or the PE department for more information

WHAT QUALIFICATION WILL I GET?

GCSE in Physical Education (PE)

OCR Cambridge National Certificate in Sport Studies

EXPECTATIONS

- Students will be expected to buy a GCSE PE polo shirt and course booklet available from the department.
Students will be expected to wear the t-shirt on all exam practical sessions.
- Regular participation is essential and expected.
- A responsible attitude and a high awareness of health and safety issues at all times.
- To be aware that there is a theory element involved alongside the practical

PROGRESSION AND POSSIBLE CAREER PATHS

There are numerous courses available at local colleges including sports science, instructor courses, A levels, BTECs.

Career possibilities include, teaching, coaching, physiotherapy, sports psychiatrist, sport and business, working in the sport and leisure industry and personal trainers to name a few.

RELIGIOUS EDUCATION (RE)

WHY SHOULD I CHOOSE THIS COURSE?

This course provides an opportunity to:

- explore ideas, values and experiences from across the world
- reflect on your opinions and others around you
- use all your senses to learn and develop
- reflect on who and what is important for your future
- develop skills for business, further education, sales, marketing, teaching and relationships.

WHAT WILL I LEARN?

- communicate with your friends and family
- develop your opinions
- extend your literacy skills
- work in a global economy
- research effectively

HOW WILL MY LEARNING BE ASSESSED?

Assessment

Two papers at the end of Year 11 - 50% each.

HOW CAN I FIND OUT MORE?

- Talk to Mr Harper for more information.
- Check out the AQA website at www.aqa.org.uk - Religious Studies Spec A
- In addition you could ask current Year 10 students studying the course.

WHAT QUALIFICATION WILL I GET?

AQA GCSE in Religious Studies

EXPECTATIONS

Students should expect to:

- Express their responses and insights on global and moral issues.
- Develop their understanding of beliefs and practices in diverse cultures.
- Analyse the impact of belief on action.

PROGRESSION AND POSSIBLE CAREER PATHS

There are opportunities to progress on to A level courses in Politics, Law, Sociology, Philosophy and Religious Studies in local Colleges. Looking further ahead a career in Travel and Tourism, Business Studies, Teaching and Law would welcome a solid grounding in multi-cultural issues.