

[www.westsussex.gov.uk/admissions](http://www.westsussex.gov.uk/admissions)



# Information for Parents Admission to Secondary School in September 2021

How to apply for a school place.  
**Important action required.**



WS110(C) 07.2020

Apply online at:

[www.westsussex.gov.uk/admissions](http://www.westsussex.gov.uk/admissions)

**Deadline: Saturday 31 October 2020**

## Information for Parents

### Admission to Secondary School – September 2021

#### How to apply for a school place – Important action required

#### Foreword by the Director of Education and Skills

Applying for a place at secondary school is an exciting and important time for children and their parents.

The time has now come for you to take that important step and apply for your child's secondary school place for September 2021. To make the process as easy as possible, West Sussex County Council encourages you to apply using the online application system at [www.westsussex.gov.uk/admissions](http://www.westsussex.gov.uk/admissions).

All the information you need to help you through the process of applying for a secondary school place is in this booklet. Before completing your application, please take the time to read this important information. The frequently asked questions pages and the admission arrangements for schools may help you decide on the best secondary schools for your child.

We recognise that this year has been an unusual year with schools taking additional precautions to ensure safety for both staff and pupils during the current pandemic. However, many schools are making arrangements for prospective parents to better understand the school and to determine whether the school is the right fit for your child. Arrangements for visiting schools or for finding more out about the school may be organised differently to the way schools have managed this previously. Before making your final decision about which secondary schools to apply for, we would strongly encourage you make contact with schools to better understand what arrangements they are making to help you better understand what the school is able to offer.

Although many children do secure a place at the first preference secondary school, this is not always possible if there are more applications for a school than there are places available. When this happens, places will be offered by applying the oversubscription criteria. You are strongly advised to provide preferences for the three different secondary schools you would like your child to attend as this provides you with the best chance of getting your child into a secondary school you want. Remember if you want your child to attend their catchment secondary school, you must include this as one of your preferences. In both Horsham and Worthing, we are in the final stages of agreeing additional options for parents from 2021 with the potential change in character of both The Forest School and St Andrew's CE High School to admit girls alongside boys from September 2021. Both schools will be able to explain in more detail how they are planning to meet the needs of girls as they become co-educational schools.

It is really important that you apply by the national deadline of **31 October 2020**. Applying after this deadline may significantly affect the secondary school that can be offered.

I wish your son or daughter the very best for when they start at their new school.



Paul Wagstaff  
Director of Education and Skills

## CONTENTS

Foreword by the Director of Education and Skills .....	1
Contents page .....	2
When you can apply .....	3
Process timeline .....	3
Applying for a school place .....	4
Points to consider before submitting your three preferences .....	5
Information about addresses .....	6
Moving house .....	6
Shared parental responsibility – duplicate and disputed applications .....	7
SEND Information, Advice and Support Service .....	8
Looked after children or previously looked after children .....	8
Children subject to a Special Guardianship Order who are not care leavers .....	8
Private fostering arrangements .....	8
Applying under the exceptional and compelling category .....	8
What happens if you apply after the deadline (out of time and late applications)? .....	9
How places are allocated .....	10
Frequently asked questions .....	10
• What is the role of the Pupil Admissions Team? .....	10
• How likely is it that my preference will be met? .....	11
• Where can I find out information about schools? .....	11
• Can I ask for my child to go to any secondary school in West Sussex? .....	11
• Can I apply for admission outside my child’s normal age group? .....	12
• Do special rules apply to twins and multiple births? .....	12
• What if my child has special educational needs? .....	12
• How do I apply to a church aided school? .....	13
• If I live outside West Sussex, how do I apply for a West Sussex school? .....	13
• Can I ask to go to a school outside West Sussex? .....	13
• Can I make alternative arrangements for my child’s education? .....	13
• My child attends an independent school – how do I apply to move them to a state school? .....	14
• My child will be attending an independent school – do I still need to complete an application? .....	14
• Can I change my preference? .....	14
• How will I hear the outcome of my application? .....	14
• What happens after allocation? .....	15
• What can I do if I am not offered a place at the school I wanted? .....	15
• Can I appeal? .....	15
• Will my child’s name be added to the waiting list? .....	16
• What happens if my child can be offered a place from the waiting list? .....	16
• Can I appeal and/or or put my child on a waiting list for a school that wasn’t an original preference? .....	16
Contact list for all Secondary Schools and Academies in West Sussex .....	17
Oversubscription Criteria for Schools in West Sussex .....	25
Variations to West Sussex County Council’s Oversubscription Criteria .....	26
• Horsham - Transfer to secondary schools in the Horsham Community Designated Area .....	26
Map of the Horsham Community Designated Area .....	27
• Steyning Grammar School .....	29
• Worthing - Oversubscription criteria for Davison CE (controlled) High School for Girls .....	31
Church Aided, Foundation Schools and Academies .....	31
Transport to school .....	32
In-year applications to join an established year group (including guidance for Service Personnel and Crown Servants) .....	38
University Technical Colleges (UTCs) .....	39
Glossary – Explanation of words/phrases used in this booklet .....	40
Useful contact telephone numbers .....	42
West Sussex Admissions North and South areas .....	43
Data Protection .....	43
Appendix 1 .....	44

## When you can apply

Online applications open at 9am on 7 September 2020 and the deadline for making an application is **31 October 2020**. If your application is received after the application deadline it will not be processed until after all on time applications. This means that your preferences will be considered after all the preferences received on time and increases the possibility that there may not be a place available at the schools you requested or at a local school. After the application deadline you cannot change your preferences unless there is a genuine unforeseeable reason for doing so, for example, if a sibling changes school. Before the application deadline you can amend the preferences by logging back into your online application. **You must re-submit your application every time you click edit your child's details or make a change to your preferences.** Only your last submitted preferences, prior to the deadline, will be considered in the allocation. If you need help making an application, or have any further questions concerning the process after reading this guidance, please telephone 03330 142 903.

**West Sussex County Council tries to ensure that all parents of children due to transfer from a West Sussex state-funded primary school in September 2021 receive information on how to apply for a secondary school place. However, the responsibility for obtaining information and making an application before the application deadline rests solely with parents.**

### Process Timeline:

- **7 September 2020:** Online applications open and we ask West Sussex state-funded primary schools to send details of how to apply online to parents of children who attend Year 6 in their school.
- **31 October 2020:** Application deadline for on time applications and the online application system closes. Please note that the online system is not monitored after the deadline of 31 October 2020 and, therefore, any changes to your details after the deadline must be notified to the Pupil Admissions Team by email or post. If you have to complete a paper form it is your responsibility to ensure that the form is returned to your local school by the deadline. Please note that schools will be closed for half term between 26-30 October 2020. Paper forms will not be acknowledged. The most secure way to apply is online. Please note that the governors of church aided schools and some academies ask parents to complete the school's Supplementary Information Form (SIF) by the same closing date. This extra information enables these schools to rank applications correctly against their admissions criteria. Please see page 45 for further details.
- **27 November 2020:** Processing deadline for receipt of out of time applications made after the application deadline and receipt of evidence regarding a request to change preferences due to a genuine unforeseeable reason. Also the deadline for receipt of evidence for house movers; please see page 6 for further information on the implications of moving during the allocation of places. Any applications received on or after 28 November 2020 will be late applications, received outside of the normal admissions round, and will not be processed until after 26 March 2020.
- **28 November 2020 – 26 February 2020:** Preferences processed and information exchanged with schools and other Local Authorities.
- **1 March 2021:** On time online applicants, and applicants who apply on or before 27 November 2020 and supply an email address, will be notified which school their child has been offered by email during the day. Please do not ring to ask which school has been offered because no decisions will be issued by telephone. Applicants who do not supply an email address will be sent a letter by second class post, posted during the day.
- **26 March 2021 onwards:** Late applications received on or after 28 November 2020, made outside the normal admissions round, processed and offer made. Waiting lists will be established and places offered if they become available.

- **April 2021** onwards: Appeals heard by independent appeal panels.
- **2 September 2021**: New academic year starts.

## Applying for a school place

All parents should apply for a school online at [www.westsussex.gov.uk/admissions](http://www.westsussex.gov.uk/admissions). When you submit your application you will receive an email containing the information on your application as confirmation that your application has been received. Please be aware that all the contact information which you provide will be shared with the allocated school to facilitate transition arrangements.

Parents who apply online will benefit as follows:

1. You can save your application before submitting it and can therefore return to it to make amendments. However, you must ensure that you submit the completed application before the application deadline of **31 October 2020**. Before the application deadline you can amend your preferences by logging back into your online application. If you click edit your child's details or make any changes after you have submitted your application you must re-submit your application and you must do so every time you click edit your child's details or make any further changes. Only your last submitted preferences, prior to the deadline, will be considered in the allocation.
2. An acknowledgement of your application is automatically sent by the system so you know your application has been received. You may need to amend your security settings in order to receive the automatic acknowledgement or it may be placed in the 'junk' or 'bulk' folder. We strongly recommend that you keep a copy of the automated acknowledgement email, which will give you a unique application reference number, as it is your only proof that you applied and we cannot investigate issues without this.
3. Free internet access will be available at all West Sussex libraries and Children and Family Centres for parents who do not otherwise have access to a computer.
4. All applicants who apply on or before 27 November 2020, and supply an email address, receive an email on 1 March 2021 confirming the result of their application.

**We would advise parents that applying online very close to the application deadline (31 October 2020) could be difficult due to high user volume. Please apply ahead of the application deadline, after visiting schools and considering the admission arrangements. The online system will close at 23:59 on 31 October 2020.** Please note that the online system is not monitored after the deadline of 31 October 2020 and, therefore, any changes to your details after the deadline must be notified to the Pupil Admissions Team by email or post.

If you have no option but to apply on a paper form, please telephone 03330 142 903 to request one. Please note that it is your responsibility to ensure that the completed form is returned to your local West Sussex primary school by the application deadline. Please note that schools will be closed for half term between 26-30 October 2020. Parents are not encouraged to return their paper forms directly to the Pupil Admissions Team unless they use Recorded Delivery post. Claims regarding missing forms will not be investigated unless you can provide evidence that it was received by the Pupil Admissions Team. West Sussex County Council is not responsible for forms lost or delayed in the post. We recommend that you keep a copy of the form and evidence of posting.

As mentioned previously, please note that the governors of church voluntary aided schools and some academies ask parents to complete the school's Supplementary Information Form (SIF) by the same closing date. This extra information enables these schools to rank applications correctly against their admissions criteria. The school must still consider your application if you choose not to complete the SIF, however failing to do so may affect the priority the school give your application under their admission criteria. Please see page 45 for more details.

## Points to consider before submitting your three preferences

- Make sure you use all three of your preferences wisely, be realistic and apply on time. School places are allocated according to the published oversubscription criteria for each school so study these carefully. This can include criteria such as whether you live in the catchment area, whether there are siblings already at the school and the distance you live from the school. You have a higher priority for your catchment school. If you make a preference for an oversubscribed school, the further away you live the less likely you are to be offered a place. If you make a preference for a school that is not your catchment school, and are offered that school, there is no guarantee that siblings will obtain places in the future. Similarly, there may be no eligibility for assistance with transport (please see the transport information on pages 32-37 of this booklet for more information).
- Personal circumstances, such as child care arrangements, are not part of the oversubscription criteria for any school and will not be taken into consideration. You are strongly encouraged to include your catchment school as one of your three preferences. If you wish your child to be considered for a place at their catchment school you must include this as one of your three preferences. You can check the catchment school for your address on our website. If you do not have access to the internet and you are not sure which is your catchment school please call 03330 142 903 to find out.
- Please do not include a school you do not want as a preference as you may be offered this school. Please do not put independent schools or Elective Home Education as preferences as they will be disregarded. Information regarding home education is available from West Sussex County Council's Elective Home Education Team on 0330 222 3300.
- After the application deadline you cannot change your on time preferences unless there is a genuine unforeseeable reason for doing so, for example if a sibling has changed school. You are advised to contact the Pupil Admissions Team to discuss your reason for changing preferences before submitting a new application.
- If you are planning to move house you must notify the Pupil Admissions Team. You may wish to contact the Pupil Admissions Team to discuss your preferences if your house move is not yet confirmed. Further information on moving house is available on page 6. If you change residency before 2 September 2021 without informing the Pupil Admissions Team, and without providing evidence of the date that you moved to your new address, this may result in the offer made being withdrawn.
- Church voluntary aided schools and some academies will ask you to complete their Supplementary Information Form (SIF) to enable the Governors or Academy Trust to consider your application against the school's oversubscription criteria. The form may ask for information about church attendance, baptism, parents working at the school etc. The school must still consider your application if you choose not to complete the SIF, however failing to do so may affect the priority the school give your application. Please see page 45 for further details.
- If you have previously visited a school and completed papers for them, you must still complete an online application before the application deadline to apply for a place at the school.
- For schools where West Sussex County Council determines the admission arrangements (i.e. community and voluntary controlled schools) a 'feeder school' system is not generally used. Davison CE High School for Girls in Worthing is an exception. Feeder school systems are used by some schools that are their own admission authority (for example some church voluntary aided schools and some academies). Please check the admission arrangements for these schools before making your application. See appendix 1 for further details.

## Information about addresses

The majority of West Sussex Schools have a catchment area. It is important that the address information for each pupil is accurate to ensure the correct priority is applied to the application.

***It is the parent's responsibility to notify the Pupil Admissions Team of any changes to their address in writing at any time before 2 September 2021.***

All changes of address that are received after the allocation will be reviewed and, if the application gained an unfair advantage and the place would not have been offered, we will withdraw the offer made. We may request evidence of the date of your address change at any time.

### Fraudulent use of addresses

If you are aware that a fraudulent address has been used for an application, you should inform the Pupil Admissions Team in writing providing as much information regarding the child and address as possible. All information will be treated as confidential and will be investigated.

If it is found that a place has been allocated using incorrect or knowingly misleading information which allowed the application an unfair advantage, the offered place will be withdrawn. If the school that should have been offered was full at allocation an alternative will be offered and this may be further away.

### Shared residency

The Pupil Admissions Team can only use one address for the purpose of allocating a school place. The address for the application is the one held on our records as being the address for your child. If your child regularly stays overnight with another parent or relative on a shared residency basis and therefore potentially has more than one address, you must confirm this in writing after making your application online. You should give both addresses and details of your child's living arrangements and state which address you believe should be used for the application i.e. your child's main address. We may contact you for further supporting evidence and this could include documentation such as a: council tax bill, medical card, utility bill, bank statement or child benefit documentation. Additional enquiries may also be made where necessary. Priority for your preferences will be decided according to the address which the Pupil Admissions Team determines as your child's main address. Parents should note that overnight stays relating to childcare arrangements are rarely considered to be a formal 'shared residency' and priority will not be given from a relative/carer's address in these circumstances. Parents should submit details of their child's shared residency by covering letter addressed to the Pupil Admissions Team.

## Moving house

### Moving after an application has been made but prior to allocation

You must make an application through your current Local Authority prior to the deadline of 31 October 2020. If you are planning to move house prior to the new school year in September, you **must** advise the Pupil Admissions Team in **writing** to ensure that your application receives the correct priority for the allocation.

Acceptable confirmation of your new address (a signed tenancy agreement or confirmation of contract exchange for a purchase) must be received by the West Sussex Pupil Admissions Team by 27 November 2020, which is our final processing deadline to allow us to use your new address for allocation. Any changes received after this date will not be processed until 26 March 2021. In these circumstances your previous address will be used for allocation on 1 March 2021 but your new address will be used for correspondence and waiting lists after allocation.

Any school place offered for your child will be on the basis of the address held on the Pupil Admissions Team records and the expectation that **your child will still be resident at this address in September 2021**. If you fail to tell us of a confirmed move before 27 November 2020, and a place would not have been offered from your new address, then the place offered will be withdrawn.

## **Moving within West Sussex after school places have been allocated**

***The Pupil Admissions Team must be advised of any changes to a pupils address in writing at any time before 2 September 2021. For an oversubscribed school you will need to provide evidence of the date you moved to your new address.***

If you are moving within West Sussex and wish to submit new preferences, a new application must be submitted along with acceptable confirmation of the new address. Where availability allows, we will offer the preferred school and the place previously offered will be withdrawn. Where we have to refuse a place because the preferred school is oversubscribed pupils will be placed on a waiting list following an application. We will confirm this and, if necessary, the alternative school offered when we write to you refusing you a place at the preferred school.

## **Moving into West Sussex after school places have been allocated**

Pupils moving into West Sussex from outside the county after the allocation date with an acceptable confirmation of address can make applications direct to West Sussex County Council. If acceptable confirmation of the new address is not available, an application must be made via your current Local Authority, requesting your preferred schools in West Sussex. Where availability allows, we will offer your preferred school and the place previously offered by your Local Authority will be withdrawn. Where we have to refuse a place because the preferred school is oversubscribed, pupils will be placed on a waiting list following an application. Once confirmation of your West Sussex address has been received, an alternative school place will be offered and the place previously offered by your former Local Authority will be withdrawn.

## **Moving out of West Sussex to another county**

Pupils moving out of West Sussex to another county must still apply through West Sussex prior to the deadline of 31 October 2020. Any preferences for out of county schools will be sent to the relevant authority for consideration.

It is advisable to contact your new Local Authority to discuss their process for moving and deadlines as they may not be the same as the ones for West Sussex.

## **Shared parental responsibility – duplicate and disputed applications**

It is for parents to agree between themselves which school(s) will be applied for before an application is submitted. You should note that the Local Authority or the admission authority will only process one application per child and will only make one offer of a school place. Where parents cannot agree about their child's educational arrangements and cannot come to an agreement as to which school(s) to apply for then they may wish to seek to have the dispute determined through the Family Courts. The Local Authority and the admission authority will not mediate between parent disputes about school applications. Where more than one application is received, the Local Authority or the Admission Authority will determine which application to process, this is normally determined on the basis of the information detailed in the Child Benefit documentation, the address held by the current educational establishment, a council tax bill or medical records. Additional enquiries may also be made where applicable. Please note that the Local Authority or Admission Authority will contact both applicants to advise that more than one application has been received. Failing to disclose information can result in a delay in offering a school place or an offer being withdrawn.

## **SEND Information, Advice and Support Service (SEND IAS)**

The SEND IAS offers support to any parents who, for a variety of reasons, may have difficulties with the school application process. This includes helping parents formulate their thoughts when choosing the type of school that may be suitable for their child and supporting parents who may need assistance completing their application. For further information on this service contact: helpline on 0330 222 8555 (Mon.-Fri. 9am – 4pm), or by email: [send.ias@westsussex.gov.uk](mailto:send.ias@westsussex.gov.uk)

## **Looked after children or previously looked after children**

Evidence is required to support applications for looked after children, or previously looked after children who ceased to be so because they were adopted, became subject to a special guardianship order, residence order or child arrangement order.

- Applications for looked after children, who are subject to a care order (under Section 31 of the Children Act 1989), should be made by the allocated social worker.
- Applications for previously looked after children who are adopted should be supported by a copy of the adoption certificate.
- Applications for previously looked after children who become subject to a special guardianship order (made under Section 14A of the Children Act 1989 - as amended by the Adoption and Children Act 2002) should be supported by a copy of the special guardianship order confirming the details of the arrangements for the child.
- Applications for previously looked after children who become subject to a residence order (made under Section 8 of the Children Act 1989) or child arrangement order (made under made under Section 12 of the Children and Families Act 2014) should be supported by a copy of the court order confirming the details of the arrangements for the child.

## **Children subject to a Special Guardianship Order who are not care leavers**

Please note that from September 2021 West Sussex County Council will give priority to children who are placed under a Special Guardianship Order who have not previously been in the care of the local authority.

## **Private fostering arrangements**

If you are caring for someone else's child for more than 28 days, you do not have parental responsibility for them and you are not a close relative such as a grandparent, brother, sister, uncle or aunt (whether full blood, half blood or by marriage or civil partnership) or step-parent, you may be private fostering. In such circumstances it is a legal requirement that you contact West Sussex County Council on: 01403 229900 or email: [MASH@westsussex.gcsx.gov.uk](mailto:MASH@westsussex.gcsx.gov.uk)

## **Applying under the exceptional and compelling category**

Parents wishing to apply to church voluntary aided schools, foundation schools and academies (type of school is shown in the contact list pages 17-25), and schools in other local authority areas, on exceptional and compelling grounds should contact the school to discuss their child's needs and the school's oversubscription criteria as not all use this category.

Many admission authorities have criteria where priority will be given to applicants if there is a strong medical case or exceptional need for the child to attend the first named school on their application. When considering applying under this category parents should bear in mind that all schools can cope with special educational needs such as Asperger Syndrome, Dyslexia etc. Schools are also experienced in managing

common childhood complaints such as asthma and allergies. Issues such as difficulties with childcare arrangements or the child's ability/school performance are not covered by this category. Please note that there is no guarantee that transport will be provided to a preferred school allocated under this category.

Parents wishing to apply under this category must state in the additional information box for their first preference what independent professional evidence they are submitting to support their application. If this information is not provided in the additional information box, and the evidence is not received by the application deadline of **31 October 2020**, then the application will not be considered under the exceptional and compelling category but will be considered against the remaining admission criteria. The evidence must be sent to the Pupil Admissions Team and if posted sent by Recorded Delivery mail. ***The supporting evidence from the qualified professional (i.e. medical consultant or a psychologist) must explain clearly why it is essential for the child to attend the school named as their first preference. It must detail fully the child's needs and address the reason why these needs can only be met at the preferred school.*** Letters from parents alone are not sufficient nor are letters that do not address the question of which school the child must attend. Letters from teachers at the child's current school will not normally be taken into account.

The Pupil Admissions Team will not contact third parties to obtain information relating to an application. It is the parents' responsibility to send any evidence relating to their child to support their application. In the case of schools where admissions are decided by West Sussex County Council, a panel of Senior Officers will consider the supporting evidence and make a decision. Applications or evidence submitted late will only be considered in exceptional circumstances. Applications under this category can only be made when the preference is originally requested.

As priority under this category cannot be assumed, parents are strongly advised to name three different preferences. Doing so will not mean the first preference is treated with less consideration. Should priority not be given on the basis of the evidence submitted, the application will be considered against the remaining admission criteria, for example, residency within the catchment area. An application under this category can only be made as a first preference. If you apply under this category for a lower preference the application will be amended and only considered against the remaining admission criteria.

Parents should be aware that the criteria for the exceptional and compelling category are **rarely met** and parents are advised to seek guidance from the relevant Admissions Authority regarding application under this category. All calls and any information received are treated in strict confidence.

## **What happens if you apply after the deadline (out of time and late application)**

To be treated as on time your completed application must be submitted by the national application deadline of **31 October 2020**. Applying after the deadline can seriously impact on the likelihood of a place being available at your preferred school.

The online application system will close at 23:59 on 31 October 2020. If you need to apply after this date, please apply using the electronic late application form on our website or telephone 03330 142 903 to request a paper form and return it to your local West Sussex primary school. Please note that the online system is not monitored after the deadline of 31 October 2020 and, therefore, any changes to your details after the deadline must be notified to the Pupil Admissions Team by email or post.

If your application is received after the application deadline of 31 October 2020 but between 1 November 2020 and 27 November 2020, it is out of time and while your preferences will be processed they will be considered after all the applications received on time. You will be notified of the outcome of your application by second class letter sent on 1 March 2021.

If your application is received on or after 28 November 2020 it is late, outside the normal admissions round, and will not be processed until after 26 March 2021. Therefore you will not receive an allocation on 1 March 2021.

Church voluntary aided schools, foundation schools and academies may deal with out of time and late applications in a different way – you should contact any of these schools if you make a preference for them after 31 October 2020, to establish how your application will be considered.

## How places are allocated

All schools have a Published Admission Number (PAN) and oversubscription criteria that apply if there are more applications than places available. The PANs for all community and controlled, church voluntary aided and foundation secondary schools and academies in West Sussex are shown on pages 17-25. The oversubscription criteria for all community and controlled secondary schools in West Sussex is shown on page 25. The oversubscription criteria for church aided and foundation schools and academies in West Sussex are available in Appendix 1 of this booklet. The full Admissions Policy is available either on the schools' websites or from the school.

All your preferences will be considered at the same time against the oversubscription criteria applicable to the relevant school. In the case of oversubscription in any of the West Sussex County Council categories, priority is given to applicants who live nearest the school (measured by a straight line from school to the child's home address, using Ordnance Survey data within the curtilage of the property). Other tie-breaks may apply to church aided and foundation schools and academies.

All your preferences are equal and an admission authority cannot discriminate against an application simply because the school was not named first on an application. Every school that a parent names on their application is treated as if it were a separate application – each one is equal – and the highest possible preference that can be met will be offered. At allocation the Pupil Admissions Team determine which if any of the three preferences can and cannot be met. If more than one preference can be met then the order the preferences were listed on the application becomes relevant and a place is offered at the school listed as the higher preference. More information for parents on the Equal Preference System is available on request.

If you wish to discuss the implications of the order of your preferences please contact the Pupil Admissions Team. We can only allocate a child one school place and any subsequent application and offer will result in the original offer being withdrawn.

Parents should note that children are not automatically considered for their catchment school and residing in a catchment area does not guarantee a place at the catchment school. Parents are strongly encouraged to include their catchment school as one of their three preferences.

## Frequently Asked Questions

### What is the role of the Pupil Admissions Team?

The role of the Pupil Admissions Team is to administer West Sussex County Council's coordinated admissions scheme, including the allocation of places at all schools in accordance with the Council's published admission policy. The Team is able to offer advice and guidance to parents making an application for their child's transfer. However, the Team is unable to:

- offer opinions on schools' suitability and performance;
- arrange visits to schools;
- allocate places outside West Sussex County Council's criteria or take account of personal circumstances, outside of exceptional and compelling cases;
- change a child's details (name or address) without written confirmation, by letter or email, and acceptable supporting documentation where appropriate;

- investigate anonymous allegations regarding false addresses without sufficient information. West Sussex County Council does treat the issue of using a false address very seriously and any correspondence of this nature is dealt with confidentially.

If you are dissatisfied with the service of the Pupil Admissions Team, in the first instance please write to the Pupil Admissions Manager for the area, see page 42. Complaints about schools should be referred to the Headteacher or the school's Governing Body.

### **How likely is it that my preference will be met?**

Please see the section on using your three preferences wisely and being realistic (under 'Points to consider before submitting your three preferences') on page 5. The lower priority you have under a school's oversubscription criteria the less likely you are to be offered a place if that school has more applications than places. For the 2020 secondary transfer rounds 98% of parents who applied on time were offered their first preference school and 87.5% were offered one of their three preferred schools.

The table on pages 17-25 gives details about the number of places offered and children refused at each state-funded secondary school in West Sussex for September 2020 admissions. This is only a guide because patterns of parental preference and the number of pupils in the area vary from year to year. The outcome of your application cannot be guaranteed. If you want further information about the previous patterns of admission to your preferred schools, please contact the Pupil Admissions Team.

### **Where can I find out information about schools?**

It is important that you do not base your preferences on other people's opinions. Each school has a prospectus and website which include details of the school's policies, uniform, the curriculum and teaching methods, term dates and school times as well as other helpful information. You can obtain a copy of the prospectus from the school and you are welcome to make an appointment to visit the school. School websites can be accessed through the West Sussex County Council website. The Government website [www.gov.uk/browse/education](http://www.gov.uk/browse/education) has links to school OFSTED reports and Department for Education performance tables. This information should also be available from the school or your local library.

Schools may invite you to attend an open session and this invitation or receipt of a prospectus should not be seen as an offer of a school place as all offers are made through the Local Authority. Headteachers may confirm that they would be happy to have your child in their school but again this is not an offer because all applications are subject to the admission criteria. Primary school children visiting a secondary school, or taking part in linked activities, does not give priority for a school.

For information on open session times and dates for schools in West Sussex please see individual school websites or contact the school. Arrangements maybe different this year due to Covid-19 restrictions.

### **Can I ask for my child to go to any secondary school in West Sussex?**

You can express a preference for any of the secondary schools listed on pages 17-25. West Sussex County Council makes every effort to meet parental preference but some schools receive more applications than the number of places available. When this happens, the oversubscription criteria are used to decide which children are offered a place. Please also see the answer to the question 'How likely is it that my preference will be met?' on page 11 for further information and advice on using your three preferences wisely and being realistic on page 5.

Schools are categorised as community, controlled, church aided (sometimes called voluntary aided), foundation schools and academies. All community and voluntary controlled schools have catchment areas and West Sussex County Council determine and manage the admissions. You can check your catchment school by entering your postcode on our website.

Many church voluntary aided schools, foundation schools, free schools and academies also have catchment areas. In the case of church voluntary aided schools, the catchment area may be defined in

terms of parishes or deaneries while others may serve an even wider area. For these schools the oversubscription criteria are shown in Appendix 1 of this booklet and full details can be found in the school's published admission arrangements on their website. Decisions to offer a place at these schools are made by the Governing Body or Academy Trust.

If you apply for a place for your child at a school that is not the catchment school for your address you should note the following:

- the Council will not provide assistance with travel or related expenses to the school;
- it is less likely that places will be available at oversubscribed schools for any brothers or sisters, should you wish them to attend at a later date;
- the tie-break for oversubscribed community and controlled schools, within any oversubscription category, is the straight line distance from home to school.

### **Can I apply for admission outside my child's normal age group?**

Parents may seek a place for their child outside of their normal age group. An application should be made to the Admission Authority for the school you wish to apply for. The decision will be made on the basis of the circumstances of each case and in the best interests of the child concerned. The right of appeal does not apply if a place is offered at the school but it is not in the preferred age group. For further information and advice please contact the Admissions Authority for the school you wish to apply for.

### **Do special rules apply to twins and children of multiple births?**

A separate application must be made for every child. Please note that sibling priority is only given when a sibling is already attending, or has an existing offer for, the school; therefore twins and multiple births do not give sibling priority to each other and their details should not be included as siblings on an application. Where West Sussex County Council is the Admissions Authority for the school and the last child to be offered a place is a twin, the other twin will normally be admitted over the published admission number. For schools that are their own admission authority please check their policy direct with the school.

### **What if my child has special educational needs?**

The great majority of pupils with some form of special educational need participate fully in mainstream schools, with help appropriate to their special needs. This includes most children for whom the Council has issued an Education, Health and Care Plan (EHCP).

If your child has an EHCP, you have a right to make a request for a school and you should already have been contacted by the Special Educational Needs Assessment Team (SENAT). If not, please contact them using the contact details shown below. We try to arrange school admissions for children with EHCPs earlier in the year than other pupils to allow sufficient time to consider requests and for the necessary consultation process to take place.

If your child is in the process of an Education, Health and Care Needs Assessment, you should still complete an application online with your mainstream school preferences. The Council will let you know whether an EHCP will be made and if a draft EHCP is issued you will be able to make a request for the school you would like your child to attend at that time. On rare occasions, if school allocations overlap with your child being assessed for an EHCP, you may receive an allocation from the Pupil Admissions Team which is different to the school you were expecting. Should this happen please contact the SENAT for advice; your child will be offered the school most appropriate to meet their needs.

Whilst we aim to meet parent requests where possible, it is the Council's responsibility to ensure placements are appropriate and are an efficient use of resources. Only children with an EHCP/draft EHCP can apply for a place at a special school or a special support centre attached to a mainstream school.

If your child has an EHCP/draft EHCP and you have any queries about the admission process, please contact SENAT using the following telephone numbers:

0330 222 2516: Chichester, Bognor Regis, Midhurst, Petworth  
0330 222 3120: Angmering, Littlehampton, Steyning, Worthing, Shoreham, Lancing  
0330 222 2722: Crawley  
0330 222 3121: Burgess Hill, Horsham, Haywards Heath, Cuckfield, East Grinstead

SENAT are located at Room 72, County Hall, Chichester, PO19 1RF.  
(Please note that callers must report to the main reception desk)  
email: [sensupportteam@westsussex.gov.uk](mailto:sensupportteam@westsussex.gov.uk).

Please only contact SENAT if your child has an EHCP/draft EHCP; for all other children admissions queries should be directed to the Pupil Admissions Team.

### **How do I apply to a church voluntary aided school or academy with a religious character?**

You apply to a church voluntary aided school or academy with a religious character in the same way as you apply for a community or voluntary controlled school, foundation school or free school, i.e. you must complete an application through West Sussex County Council and return it online (applicants from outside West Sussex should follow their home Local Authority's application process).

For church voluntary aided schools and academies with a religious character, if you wish your application to be given priority on denominational grounds you must complete a Supplementary Information Form (SIF) and return it direct to the school. SIFs are available in Appendix 1 of this booklet and can be obtained from the schools concerned. SIFs must be returned to the church voluntary aided school or academy with a religious character by the national application deadline which is 31 October 2020.

### **If I live outside West Sussex, how do I apply for a West Sussex school?**

Parents living outside West Sussex can apply for a school in this county but must do so by applying via their own Local Authority. This is the Local Authority for the county or city in which you live (telephone numbers for neighbouring Local Authorities are at the back of this booklet). You may wish to contact the Local Authority for your home to discuss the implications of listing a West Sussex school as a preference. Your home Local Authority will let us know about your application. Once decisions have been made we will inform your home Local Authority and they will notify you on **1 March 2021**. The oversubscription criteria for all schools apply to all applicants, regardless of where they live.

### **Can I ask to go to a school outside West Sussex?**

Parents living in West Sussex wishing to apply for a school place in another county or city must still apply online from the West Sussex website listing their preference(s). We will tell the appropriate Local Authority about your application but you may find it helpful to contact them yourself to discuss your application (addresses and telephone numbers for neighbouring Local Authorities can be found at the back of this booklet). Once decisions have been made the appropriate Local Authority will let us know and we will notify you on 1 March 2021.

### **Can I make alternative arrangements for my child's education?**

You may decide to educate your child yourself at home. This is called Elective Home Education. It is important that the Pupil Admissions Team is aware of your plans, so that a place is not allocated unnecessarily for your child. Please confirm these alternative arrangements to the Pupil Admissions Team in writing. Your child will not then be allocated a school place. Please do not list Elective Home Education as a preference on an application as it will be disregarded and a school place offered. Please note that if

you choose to educate your child yourself you do not receive any additional priority for a school place should you wish to apply at a later date.

Information regarding home education is available from West Sussex County Council's Elective Home Education Team on 0330 222 3300.

### **My child attends an independent school - how do I apply to move them to a state-funded school?**

Information on how to apply for a school place is not automatically sent to children attending school in the independent sector. Parents must apply through their home Local Authority for secondary transfer. Parents resident in West Sussex can apply online at [www.westsussex.gov.uk/admissions](http://www.westsussex.gov.uk/admissions) or if this is not possible, telephone 03330 142 903 to request a paper form. The application deadline is 31 October 2020.

### **My child will be attending an independent school – do I still need to complete an application?**

If you have received a confirmed offer of a place for your child at an independent school please confirm these arrangements to the Pupil Admissions Team in writing. Your child will not then be offered a state-funded school place. If your application to an independent school is still being considered and a place is yet to be formally offered, we recommend that you make an application online expressing three preferences for maintained schools in order to ensure your child has a school place for September 2021. If you are uncertain about your pending application to an independent school and would like further advice on making your application, please contact the Pupil Admissions Team for guidance. Please do not list an independent school as a preference on an application as it will be disregarded and a state school place offered.

### **Can I change my preference?**

Before the national closing date of **31 October 2020** you can amend your preferences by logging back into your online application. **You must re-submit your application every time you click edit your child's details or make a change to your preferences.** Only your last submitted preferences, prior to the deadline, will be considered in the allocation.

After the deadline has passed you cannot change your preferences unless there is a genuine unforeseeable reason for you needing to do so, for example, if a sibling has moved schools. Evidence of the change will be required before the processing deadline of 27 November 2020 for the Pupil Admissions Team to amend your preferences and any other relevant information linked to your application.

Parents wishing to change their preferences after the deadline without a genuine unforeseeable reason cannot submit new preferences until after the allocation date. At that time parents should complete a new application through our website. Changes of preference in this instance are outside the normal admissions round, and along with late applications, will not be processed until after 26 March 2021.

### **How will I hear the outcome of my application?**

If you apply on or before 27 November 2020, and supply an email address, you will be sent an email on allocation day to confirm the outcome of your application. It is therefore important that you use an email account you will have access to on allocation day. Parents who do not supply an email address will receive a letter, which is sent by 2<sup>nd</sup> class post on allocation day, with the outcome of their application.

If you apply on or after 28 November 2020 you will not receive an allocation on 1 March 2021; your application will not be processed until after 26 March 2021. You should expect to hear the outcome of your application in April 2021.

Parents will not be notified of the outcome of their application over the telephone and applicants unable to access email accounts used in an application must request their allocation result be issued by letter which will be sent by 2<sup>nd</sup> class post.

## What happens after allocation?

The majority of parents in West Sussex will receive an offer of a school place at a school they expressed a preference for. The Headteacher of the school your child has been allocated will contact you to confirm the school's induction arrangements. **Accepting the place offered does not affect your right of appeal or to be on the waiting list for any school you have been refused.** If your address has or will be changing you must notify the Pupil Admissions Team without delay.

Different arrangements may apply for parents being offered school places in other Local Authority areas. If you have been offered a school in another Local Authority area you should contact the school to confirm the necessary arrangements for entry to the school.

Parents wishing to add or change preferences on their application can do so after the allocation date by submitting either an electronic late application form through our website or by completing a paper form. When doing so parents should clarify the order of the new preferences and any previous ones. Changes of preference in this instance are outside the normal admissions round, and along with late applications, will not be processed until after 26 March 2021.

## What can I do if I am not offered a place at the school I wanted?

If we cannot offer your child a place at any of your preferred schools, we will offer a place at your catchment school if availability allows or, if your catchment school is full, you will be offered a place at the nearest school to your home address with a place available. (This only applies to children resident in West Sussex. If you live in another Local Authority's area they will offer you a place at one of their schools, if your preferences cannot be met). For this reason we always advise parents to include their child's catchment school as one of their three preferences. If you are unhappy with the school you have been offered The Pupil Admissions Team can tell you which alternative schools have places available but you should be aware these may be further from your home address than the offer you currently have. Please note that we have a statutory obligation to offer your child a school place and, therefore, we will not withdraw the place offered until we receive written confirmation, by letter or email, of the alternative arrangements you have made for your child's education.

## Can I appeal?

You have the right to appeal against the decision not to offer a place at any of your preferred schools. All appeals are heard by an independent panel. If you have been refused a place in West Sussex at your preferred school(s) in writing, you can access an online appeal form and details of the appeals process on the West Sussex website. If you require a paper form you can ring 03330 142 903 to request one. If you decide to appeal, you will receive advance notice of the hearing date. You will be invited to attend the appeal and you may take someone with you for support. The hearing will be conducted as informally as possible and you will have the opportunity to put forward your case and ask questions.

If your appeal is refused, the Local Authority or Admission Authority (at an academy, church voluntary aided school, foundation school or free school) will not consider a further application or appeal for a place at the same school, in the same academic year, unless there is a significant material change in your circumstances or those of the school.

Please note that appealing for a school place does not give priority on a waiting list. If you were refused a school place outside of West Sussex then you need to contact the Admission Authority for the school refused for information on their appeal process.

## Will my child's name be added to the waiting list?

If your child was refused a place in writing at a West Sussex school they will automatically be added to the waiting list for that school. Waiting lists are set-up 20 school days after the allocation date and will be held until 31 December. If you wish your child to remain on any list after this date you must confirm this in writing or by email to the Pupil Admissions Office in December. It is the parent's responsibility to make contact with the Pupil Admissions Team – reminders will not be sent. If you have been refused a place at an Academy, Church Aided or Free School the waiting list will be held by the Admissions Team until September, when it will be passed to the school. From September you should contact the school directly regarding their management of the list. If you were refused a school place outside of West Sussex you need to contact the Local Authority for the school refused for information on their waiting list procedure.

All waiting lists are held in accordance with the School Admissions Code as required by the Department for Education. For example waiting lists must reflect the over-subscription criteria used at allocation and it is prohibited to prioritise lists using a date order. The oversubscription criteria for all Community and Controlled schools in West Sussex are shown on page 25. The oversubscription criteria for church aided and foundation schools and academies in West Sussex are shown in Appendix 1 of this booklet and are also available on the schools' websites or from the schools. For Community and Controlled schools, within each criterion waiting list positions are ordered by straight line distance to the school, the nearest having higher priority. If a place becomes available following the allocation it will be offered to the child at the top of the waiting list at that time.

## What happens if my child can be offered a place from the waiting list?

If a place becomes available from a waiting list, you will be contacted using the information in your application. If we do not receive a reply from you within 5 working days of trying to contact you, your child's name will be removed from the waiting list and the place will be reallocated to the next child on that list. You may wish to provide additional contact information in order to ensure you can be contacted promptly in the event of a place becoming available. When doing so please ensure you consider your access to that route of contact i.e. can you access your emails whilst on holiday.

You should note we do not rank children on waiting lists until a place actually becomes available. At that time waiting lists are reviewed in accordance with the relevant school's over subscription criteria. The available place is then offered to the child at the top of the list at that time. The Admissions Team will only contact you regarding a waiting list if a place becomes available that can be offered to your child. We are unable to give any indication as to the likelihood of a place becoming available as spaces can only be allocated if children withdraw from a school's intake list. **For this reason we would ask that you do not contact the Pupil Admissions Team regarding waiting list positions.** Should you decide that you no longer want your child's name on a list please notify us as this will help prevent unnecessary delays in reallocating spaces should they become available. The team may contact parents as the academic year progresses to confirm if they wish their child's name to remain on a waiting list. This is to ensure the smooth operation of the lists and to avoid delays in allocating places should they become available.

Unless you are advised of an alternative school place, you should assume the place offer made for your child remains available and liaise with the school regarding their intake arrangements when they make contact with you.

## Can I appeal and/or put my child on a waiting list for a school that wasn't an original preference?

If you wish to appeal or have your child placed on a waiting list for a school that was not one of your original preferences, you must first make an application for that school by completing an application form available at [www.westsussex.gov.uk](http://www.westsussex.gov.uk) or calling 03330 142 903. Only when you have been refused a place in writing can you appeal and your child will be placed on the waiting list. Late applications are

automatically added to the waiting list and we will confirm this when we write to you refusing you a place at the school.

## Contact List for all Secondary Schools in the West Sussex

Contact List for all Secondary Schools in the West Sussex; including community, foundation, voluntary controlled or voluntary aided school and academies. All these schools will be co-educational from September 2021 with the exception of Millais Girls School in Horsham and Davison CE (voluntary controlled) High School for Girls in Worthing.

Name of School Headteacher Postal Address Telephone Number E-Mail Address Website DfE Number	School Type - Age Range - Supplement Information Form (SIF) (If yes see Appendix 1)	Expected number on roll September 2020	Published Admission Number 2021/22	Number of preferences expressed before the deadline for September 2020	Number of places offered at allocation date (2 March 2020) for September 2020	How places were allocated for September 2020 (see the school's oversubscription criteria for details)	Criteria and distance (in metres) of the last place offered at allocation (16 April 2020) for oversubscribed schools
<b>Angmering The Angmering School</b> Mr S Liley Station Road, Angmering, BN16 4HH (01903) 772351 <a href="mailto:office@theangmeringschool.co.uk">office@theangmeringschool.co.uk</a> <a href="http://www.angmeringschool.co.uk">www.angmeringschool.co.uk</a> 4060	Community  11 – 18  No SIF	1178	270	269	269	All applicants who requested this school by the deadline were offered a place	N/A
<b>Barnham St Philip Howard Catholic School</b> Mr D Carter Elm Grove South Barnham Bognor Regis PO22 0EN (01243) 552055 <a href="mailto:admissions@sphcs.co.uk">admissions@sphcs.co.uk</a> <a href="http://www.sphcs.co.uk">www.sphcs.co.uk</a> 4800	Voluntary Aided  11 – 18  Yes SIF	934	200	291	200	See Appendix 1	See Appendix 1
<b>Billingshurst The Weald School</b> Mr P Woodman Station Road, Billingshurst, RH14 9RY (01403) 787200 <a href="mailto:office@theweald.org.uk">office@theweald.org.uk</a> <a href="http://www.theweald.org.uk">www.theweald.org.uk</a> 4025	Community  11-18  No SIF	1766	300	357	320	EHCP = 4 1 LAC & PLAC = 1 2 E&C = 1 3 In Area Sibling = 87 4 In Area = 167 5 Out Area Sibling = 24 6 Out Area = 36	Criteria 6 Distance 9637.87
<b>Bognor Regis/Felpham The Regis School</b> Mr D Oaks Westloats Lane Bognor Regis PO21 5LH (01243) 871010 <a href="mailto:enquires@theregisschool.co.uk">enquires@theregisschool.co.uk</a> <a href="http://www.theregisschool.co.uk">www.theregisschool.co.uk</a> 4005	Academy  11 – 19  No SIF	1447	300	294	302	See Appendix 1	See Appendix 1

Name of School Headteacher Postal Address Telephone Number E-Mail Address Website DfE Number	School Type - Age Range - Supplement Information Form (SIF) (If yes see Appendix 1)	Expected number on roll September 2020	Published Admission Number 2021/22	Number of preferences expressed before the deadline for September 2020	Number of places offered at allocation date (2 March 2020) for September 2020	How places were allocated for September 2020 (see the school's oversubscription criteria for details)	Criteria and distance (in metres) of the last place offered at allocation (16 April 2020) for oversubscribed schools
<b>Bognor Regis/Felpham Felpham Community College</b> Mr M Anstiss Felpham Way Felpham PO22 8EL (01243) 826511 <a href="mailto:fcc@felpham.org.uk">fcc@felpham.org.uk</a> <a href="http://www.felpham.com">www.felpham.com</a> 4059	Community  11 – 18  No SIF	1224	300	262	266	All applicants who requested this school were offered a place and those whose preferences for other schools couldn't be offered where this was either their catchment school or the nearest school with a place available.	N/A
<b>Burgess Hill The Burgess Hill Academy</b> Mr J Francies Station Road, Burgess Hill, RH15 9EA (01444)241691 <a href="mailto:office@theburgesshillacademy.org.uk">office@theburgesshillacademy.org.uk</a> <a href="http://www.theburgesshillacademy.org.uk">www.theburgesshillacademy.org.uk</a> 4012	Academy  11-16  No SIF	949	240	222	231	All applicants who requested this school for September 2020 were offered a place, including children who applied after the deadline and those whose preferences for other schools couldn't be offered where this was either their catchment school or the nearest school with a place available.	N/A
<b>Burgess Hill St Paul's Catholic College</b> Mr R Carter Jane Murray Way, Burgess Hill, RH15 8GA (01444) 873898 <a href="mailto:info@stpaulscatholiccollege.co.uk">info@stpaulscatholiccollege.co.uk</a> <a href="http://www.stpaulscatholiccollege.co.uk">www.stpaulscatholiccollege.co.uk</a> 4610	Voluntary Aided  11-18  Yes SIF	855	180	202	180	See Appendix 1	See Appendix 1
<b>Chichester Bishop Luffa School</b> Mr A Hindman Westgate Chichester PO19 3LT (01243) 832702 (admissions) <a href="mailto:admissions@bishopluffa.org.uk">admissions@bishopluffa.org.uk</a> <a href="http://www.bishopluffa.org.uk">www.bishopluffa.org.uk</a> 4604	Academy  11 – 18  Yes SIF	1200	240	355	240	See Appendix 1	See Appendix 1
<b>Chichester Chichester Free School</b> Mrs L New Hunston Road Chichester West Sussex PO20 1NP (01903) 792690 <a href="mailto:admissions@chichesterfreeschool.org.uk">admissions@chichesterfreeschool.org.uk</a> <a href="http://www.chichesterfreeschool.org.uk">www.chichesterfreeschool.org.uk</a> 4006	Free School  4 – 16  No SIF	Y7- Y11 Only  575	60	108	65	See Appendix 1	Last criteria allocated randomly not by straight line distance

Name of School Headteacher Postal Address Telephone Number E-Mail Address Website DfE Number	School Type - Age Range - Supplement Information Form (SIF) (If yes see Appendix 1)	Expected number on roll September 2020	Published Admission Number 2021/22	Number of preferences expressed before the deadline for September 2020	Number of places offered at allocation date (2 March 2020) for September 2020	How places were allocated for September 2020 (see the school's oversubscription criteria for details)	Criteria and distance (in metres) of the last place offered at allocation (16 April 2020) for oversubscribed schools
<b>Chichester Chichester High School</b> Mrs J McKeown Kingsham Road, Chichester, PO19 8EB (01243) 787014 <a href="mailto:office@chs-tkat.org">office@chs-tkat.org</a> <a href="http://www.chs-tkat.org">www.chs-tkat.org</a> 4001	Academy  11 – 18  No SIF	1249	300	259	291	All applicants who requested this school were offered a place including children who applied after the deadline and those whose preferences for other schools couldn't be offered where this was either their catchment school or the nearest school with a place available.	N/A
N.B. part of Chichester High School's catchment area is shared with The Academy Selsey							
<b>Crawley The Gatwick School</b> Ms B Greenhalgh 23 Gatwick Road, Crawley, RH10 9TP 01293 538779 <a href="mailto:info@thegatwickschool.org.uk">info@thegatwickschool.org.uk</a> <a href="http://www.thegatwickschool.org.uk">www.thegatwickschool.org.uk</a> 4011	Free School  4-16  No SIF	477	120	85	114	All applicants who requested this school for September 2020 were offered a place, including children who applied after the deadline and those whose preferences for other schools couldn't be offered where this was either their catchment school or the nearest school with a place available.	N/A
N.B. Students in Year 6 at The Gatwick School will automatically be entitled to a place in Year 7							
<b>Crawley Hazelwick School</b> Ms A Fearon Hazelwick School Close, Three Bridges, Crawley, RH10 1SX (01293) 403344 <a href="mailto:office@hazelwick.org.uk">office@hazelwick.org.uk</a> <a href="http://www.hazelwick.org">www.hazelwick.org</a> 4029	Academy  11-18  Yes SIF	1500	300	449	300	See Appendix 1	See Appendix 1
<b>Crawley The Holy Trinity CofE Secondary School</b> Rev C Millwood Buckswood Drive, Crawley, RH11 8JE (01293) 423690 <a href="mailto:office@holyltrinitycrawley.org.uk">office@holyltrinitycrawley.org.uk</a> <a href="http://www.holytrinity.w-sussex.sch.uk">www.holytrinity.w-sussex.sch.uk</a> 4606	Voluntary Aided  11-18  Yes SIF	1050	210	274	210	See Appendix 1	See Appendix 1
<b>Crawley Ifield Community College</b> Mr R Corbett Crawley Avenue, Ifield, RH11 0DB (01293) 420500 <a href="mailto:office@ifieldcc.co.uk">office@ifieldcc.co.uk</a> <a href="http://www.ifieldcc.w-sussex.sch.uk">www.ifieldcc.w-sussex.sch.uk</a> 4030	Community  11-18  No SIF	1145	210	243	210	EHCP = 1 1 LAC & PLAC = 0 2 E&C = 0 3 In Area Sibling = 45 4 In Area = 146 5 Out Area Sibling = 7 6 Out Area = 11	Criteria 6 Distance 1878.94

Name of School Headteacher Postal Address Telephone Number E-Mail Address Website DfE Number	School Type - Age Range - Supplement Information Form (SIF) (If yes see Appendix 1)	Expected number on roll September 2020	Published Admission Number 2021/22	Number of preferences expressed before the deadline for September 2020	Number of places offered at allocation date (2 March 2020) for September 2020	How places were allocated for September 2020 (see the school's oversubscription criteria for details)	Criteria and distance (in metres) of the last place offered at allocation (16 April 2020) for oversubscribed schools
<b>Crawley Oriel High School</b> Mr P Stack Maidenbower Lane, Maidenbower, Crawley, RH10 7XW (01293) 880350 <a href="mailto:office@oriel.w-sussex.sch.uk">office@oriel.w-sussex.sch.uk</a> <a href="http://www.oriel.w-sussex.sch.uk">www.oriel.w-sussex.sch.uk</a> 4003	Community  11-18  No SIF	1431	240	320	240	EHCP = 7 1 LAC & PLAC = 4 2 E&C = 0 3 In Area Sibling = 57 4 In Area = 109 5 Out Area Sibling = 23 6 Out Area = 40	Criteria 6 Distance 1381.95
<b>Crawley St Wilfrid's Catholic Comprehensive School</b> Mr M Ferry St Wilfrid's Way, Crawley, RH11 8PG (01293) 421421 <a href="mailto:office@stwilfrids.com">office@stwilfrids.com</a> <a href="http://www.stwilfrids.com">www.stwilfrids.com</a> 4602	Voluntary Aided  11-18  Yes SIF	795	150	324	180	See Appendix 1	See Appendix 1
<b>Crawley Thomas Bennett Community College</b> Mr S Smith Ashdown Drive, Tilgate, Crawley, RH10 5AD (01293) 526255 <a href="mailto:admin@thomasbennett-tkat.org">admin@thomasbennett-tkat.org</a> <a href="http://www.thomasbennett-tkat.org">www.thomasbennett-tkat.org</a> 4044	Academy  11-18  No SIF	940	240	137	229	All applicants who requested this school for September 2020 were offered a place, including children who applied after the deadline and those whose preferences for other schools couldn't be offered where this was either their catchment school or the nearest school with a place available.	N/A
<b>Cuckfield Warden Park Secondary Academy</b> Mr D Kenrick Broad Street, Cuckfield, Haywards Heath, RH17 5DP (01444) 457881 <a href="mailto:admin@wardenpark.co.uk">admin@wardenpark.co.uk</a> <a href="http://www.wardenpark.w-sussex.co.uk">www.wardenpark.w-sussex.co.uk</a> 4103	Academy  11-16  Yes SIF	1472	300	327	300	See Appendix 1	See Appendix 1
<b>East Grinstead Imberhome School</b> Mr M Brown Imberhome Lane, East Grinstead, RH19 1QY (01342) 323562 <a href="mailto:info@imberhome.co.uk">info@imberhome.co.uk</a> <a href="http://www.imberhome.co.uk">www.imberhome.co.uk</a> 4106	Community  11-18  No SIF	1623	270	273	270	EHCP = 4 1 LAC & PLAC = 2 2 E&C = 1 3 In Area Sibling = 56 4 In Area = 139 5 Out Area Sibling = 12 6 Out Area = 56	Criteria 6 Distance 12191.39

Name of School Headteacher Postal Address Telephone Number E-Mail Address Website DfE Number	School Type - Age Range - Supplement Information Form (SIF) (If yes see Appendix 1)	Expected number on roll September 2020	Published Admission Number 2021/22	Number of preferences expressed before the deadline for September 2020	Number of places offered at allocation date (2 March 2020) for September 2020	How places were allocated for September 2020 (see the school's oversubscription criteria for details)	Criteria and distance (in metres) of the last place offered at allocation (16 April 2020) for oversubscribed schools
<b>East Grinstead Sackville School</b> Mr J Grant Lewes Road, East Grinstead, RH19 3TY (01342) 410140 <a href="mailto:secretary@sackvilleschool.org.uk">secretary@sackvilleschool.org.uk</a> <a href="http://www.sackville.w-sussex.sch.uk">www.sackville.w-sussex.sch.uk</a> 4107	Community  11-18  No SIF	1650	270	321	270	EHCP = 3 1 LAC & PLAC = 2 2 E&C = 0 3 In Area Sibling = 62 4 In Area = 133 5 Out Area Sibling = 40 6 Out Area = 30	Criteria 6 Distance 3977.39
<b>Hassocks Downlands Community School</b> Mr M Wignall Dale Avenue, Hassocks, BN6 8LP (01273) 845892 <a href="mailto:office@downlands.w-sussex.sch.uk">office@downlands.w-sussex.sch.uk</a> <a href="http://www.downlands.w-sussex.sch.uk">www.downlands.w-sussex.sch.uk</a> 4105	Community  11-16  No SIF	1197	240	301	240	EHCP = 5 1 LAC & PLAC = 5 2 E&C = 0 3 In Area Sibling = 67 4 In Area = 158 5 Out Area Sibling = 5 6 Out Area = 0	Criteria 5 Distance 3951.42
<b>Haywards Heath Oathall Community College</b> Mr E Rodriguez Appledore Gardens, Haywards Heath, RH16 2AQ (01444) 414001 <a href="mailto:office@oathall.org">office@oathall.org</a> <a href="http://www.oathall.org">www.oathall.org</a> 4102	Community  11-16  No SIF	1119	270	255	265	All applicants who requested this school for September 2020 were offered a place, including children who applied after the deadline and those whose preferences for other schools couldn't be offered where this was either their catchment school or the nearest school with a place available.	N/A
<b>Horsham Bohunt School Horsham</b> Ms G Ayling (01403) 627430 <a href="mailto:enquiries@bohunthorsham.com">enquiries@bohunthorsham.com</a> <a href="http://www.bohunthorsham.com">www.bohunthorsham.com</a> 4014	Free school  11-16  No SIF	246	240	211	120	See Appendix 1	See Appendix 1
Bohunt School Horsham opened as a new school in temporary accommodation in Hurst Road Horsham in September 2019. They admitted 120 pupils in 2019 and 2020 but will admit 240 in September 2021 in anticipation of moving to their new purpose-built site North of the town. The DfE expect the new school to be ready for occupation from January 2022.							
<b>Horsham The Forest School</b> Mr I Straw Comptons Lane, Horsham, RH13 5NT (01403) 261086 <a href="mailto:office@theforestschool.net">office@theforestschool.net</a> <a href="http://www.theforestschool.com">www.theforestschool.com</a> 4009	Community  11-16  No SIF	1055	228	195	207	All applicants who requested this school for September 2020 were offered a place, including children who applied after the deadline and those whose preferences for other schools couldn't be offered where this was either their catchment school or the nearest school with a place available.	N/A

Name of School Headteacher Postal Address Telephone Number E-Mail Address Website DfE Number	School Type - Age Range - Supplement Information Form (SIF) (If yes see Appendix 1)	Expected number on roll September 2020	Published Admission Number 2021/22	Number of preferences expressed before the deadline for September 2020	Number of places offered at allocation date (2 March 2020) for September 2020	How places were allocated for September 2020 (see the school's oversubscription criteria for details)	Criteria and distance (in metres) of the last place offered at allocation (16 April 2020) for oversubscribed schools
The Forest School is currently a single sex school for boys. From September 2021 they will become co-educational and admit girls into Year 7. All Years of entry prior to 2021 will remain single sex until July 2025 when the last single sex cohort will leave the school. From September 2025 all Year groups will be co-educational.							
<b>Horsham Millais School (Girls)</b> Dr A Lodwick Depot Road, Horsham, RH13 5HR (01403) 254932 <a href="mailto:admin@millais.org.uk">admin@millais.org.uk</a> <a href="http://www.millais.org.uk">www.millais.org.uk</a> 4010	Community  11-16  No SIF	1530	300	357	300	See Appendix 1	See Appendix 1
<b>Horsham Tanbridge House School</b> Mr J White Farthings Hill, Guildford Road, Horsham, RH12 1SR (01403) 263628 <a href="mailto:office@ths.uk.net">office@ths.uk.net</a> <a href="http://www.tanbridge-house-sch.co.uk">www.tanbridge-house-sch.co.uk</a> 4002	Community  11-16  No SIF	1541	300	425	300	See Appendix 1	See Appendix 1
<b>Lancing Sir Robert Woodard Academy</b> Mr K Scanlon Upper Boundstone Lane, Lancing, BN15 9QZ (01903) 767434 <a href="mailto:enquires@srwa.woodard.co.uk">enquires@srwa.woodard.co.uk</a> <a href="http://www.srwa.woodard.co.uk">www.srwa.woodard.co.uk</a> 6911	Academy  11 – 18  No SIF	1104	330	246	296	All applicants who requested this school were offered a place including children who applied after the deadline and those whose preferences for other schools couldn't be offered where this was either their catchment school or the nearest school with a place available.	N/A
N.B. part of Sir Robert Woodard Academy's catchment area is shared with Shoreham Academy							
<b>Littlehampton The Littlehampton Academy</b> Mr M Thomas Fitzalan Road Littlehampton BN17 6FE (01903) 711120 <a href="mailto:office@tla.woodard.co.uk">office@tla.woodard.co.uk</a> <a href="http://www.tla.woodard.co.uk">www.tla.woodard.co.uk</a> 6912	Academy  11 – 18  No SIF	1218	330	234	268	All applicants who requested this school were offered a place including children who applied after the deadline and those whose preferences for other schools couldn't be offered where this was either their catchment school or the nearest school with a place available.	N/A
N.B. part of The Littlehampton Academy's catchment area is shared with Ormiston Six Villages Academy							
<b>Midhurst Midhurst Rother College</b> Mr S Edwards North Street Midhurst GU29 9DT (01730) 812451 <a href="mailto:enquiries@mrc-academy.org">enquiries@mrc-academy.org</a> <a href="http://www.mrc-academy.org">www.mrc-academy.org</a> 6913	Academy  11 – 18  No SIF	1031	180	234	241	See Appendix 1	N/A

Name of School Headteacher Postal Address Telephone Number E-Mail Address Website DfE Number	School Type - Age Range - Supplement Information Form (SIF) (If yes see Appendix 1)	Expected number on roll September 2020	Published Admission Number 2021/22	Number of preferences expressed before the deadline for September 2020	Number of places offered at allocation date (2 March 2020) for September 2020	How places were allocated for September 2020 (see the school's oversubscription criteria for details)	Criteria and distance (in metres) of the last place offered at allocation (16 April 2020) for oversubscribed schools
<b>Selsey</b> <b>The Academy Selsey</b> Mr T Garfield School Lane Selsey PO20 9EH (01243) 602558 <a href="mailto:office@theacademyselsey-tkat.org">office@theacademyselsey-tkat.org</a> <a href="http://www.theacademyselsey-tkat.org">www.theacademyselsey-tkat.org</a> 4004	Academy  11 – 16  No SIF	428	150	83	87	All applicants who requested this school were offered a place including children who applied after the deadline	N/A
N.B. part of The Academy Selsey's catchment area is shared with Chichester High School							
<b>Shoreham-by-Sea</b> <b>Shoreham Academy</b> Mr J Coupe Kingston Lane, Shoreham-By Sea, BN43 6YT (01273) 274100 <a href="mailto:enquires@shoreham-academy.org">enquires@shoreham-academy.org</a> <a href="http://www.shoreham-academy.org">www.shoreham-academy.org</a> 6914	Academy  11 – 18  No SIF	1481	300	362	300	See Appendix 1	See Appendix 1
N.B. part of Shoreham Academy's catchment area is shared with Sir Robert Woodard Academy							
<b>Southbourne</b> <b>Bourne Community College</b> Mrs Y Watkins Park Road Southbourne Emsworth , PO10 8PJ (01243) 375691 <a href="mailto:office@bourne.org.uk">office@bourne.org.uk</a> <a href="http://www.bourne.org.uk">www.bourne.org.uk</a> 4028	Foundation  11 – 16  No SIF	805	180	192	181	See Appendix 1	See Appendix 1
<b>Steyning</b> <b>Steyning Grammar School</b> (with Boarding Facilities) Mrs N Nicol & Mr N Kennedy Shooting Field, Steyning, BN44 3RX And Rock Road, Storrington, Pulborough, RH20 3AA (01903) 814555 <a href="mailto:sgs@sgs.uk.net">sgs@sgs.uk.net</a> <a href="http://www.sgs.uk.net">www.sgs.uk.net</a> 4501	Voluntary Controlled  11 – 18  No SIF	1819	390	415	391	EHCP = 4 1 LAC & PLAC = 6 2 E&C = 0 3 In Area Sibling = 112 4 In Area = 208 5 Out Area Sibling = 22 6 Out Area = 39	Criteria 6 – Out Area  6881.44 m
N.B. Steyning Grammar School will become an Academy from November 2020							

Name of School Headteacher Postal Address Telephone Number E-Mail Address Website DfE Number	School Type - Age Range - Supplement Information Form (SIF) (If yes see Appendix 1)	Expected number on roll September 2020	Published Admission Number 2021/22	Number of preferences expressed before the deadline for September 2020	Number of places offered at allocation date (2 March 2020) for September 2020	How places were allocated for September 2020 (see the school's oversubscription criteria for details)	Criteria and distance (in metres) of the last place offered at allocation (16 April 2020) for oversubscribed schools
<b>Westergate Ormiston Six Villages Academy</b> Mr P Slaughter Lime Avenue Westergate PO20 3UE (01243) 546800 <a href="mailto:Osva_office@ormistonsixvillagesacademy.org.uk">Osva_office@ormistonsixvillagesacademy.org.uk</a> <a href="http://www.ormistonsixvillagesacademy.co.uk">www.ormistonsixvillagesacademy.co.uk</a> 4007	Academy  11 – 16  No SIF	541	150	132	138	All applicants who requested this school were offered a place including those whose preferences for other schools couldn't be offered where this was either their catchment school or the nearest school with a place available.	N/A
N.B. part of Ormiston Six Villages Academy's catchment area is shared with The Littlehampton Academy							
<b>Worthing Bohunt School Worthing</b> Mr A Whitehead Broadwater Road, Worthing, BN14 8AH (01903) 601361 <a href="mailto:info@bohuntworthing.com">info@bohuntworthing.com</a> <a href="http://www.bohuntworthing.com">www.bohuntworthing.com</a> 4008	Academy  11 – 16  No SIF	902	180	285	181	See Appendix 1	See Appendix 1
Chatsmore Catholic High School is now called St Oscar Romero Catholic School (see below)							
<b>Worthing Davison CE High School for Girls</b> Mr C Keating Selborne Road, Worthing, BN11 2JX (01903) 233835 <a href="mailto:info@davison.w-sussex.sch.uk">info@davison.w-sussex.sch.uk</a> <a href="http://www.davison.w-sussex.sch.uk">www.davison.w-sussex.sch.uk</a> 4502	Voluntary Controlled  11 – 16  Yes SIF	1342	270	303	271	EHCP = 3 1 LAC & PLAC = 1 2 E&C = 0 3 Sibling = 49 4 Linked School = 5 5 In Borough of Worthing = 176 6 Out of Borough (DENOM) = 11 7 Out of Borough of Worthing = 26	Criteria 7 – Out of Borough of Worthing  4136.00 m
<b>Worthing Durrington High School</b> Ms S Marooney The Boulevard, Worthing, BN13 1JX (01903) 244957 <a href="mailto:admin@durringtonhigh.w-sussex.sch.uk">admin@durringtonhigh.w-sussex.sch.uk</a> <a href="http://www.durringtonhigh.w-sussex.sch.uk">www.durringtonhigh.w-sussex.sch.uk</a> 4065	Academy  11 – 16  No SIF	1643	330	380	329	See Appendix 1	See Appendix 1
<b>Worthing St Andrew's CE High School</b> Jonathan Morris Sackville Road, Worthing, BN14 8BG (01903) 820676 <a href="mailto:office@st-andrews-boys.org.uk">office@st-andrews-boys.org.uk</a> <a href="http://www.st-andrews-boys.org.uk">www.st-andrews-boys.org.uk</a> 4601	Voluntary Aided  11 – 16  No SIF	586	180	67	102	All applicants who requested this school were offered a place including children who applied after the deadline and those whose preferences for other schools couldn't be offered where this was either their catchment school or the nearest school with a place available.	N/A
St Andrew's CE High School for Boys to become co-educational starting with Year 7 only from September 2021							

Name of School Headteacher Postal Address Telephone Number E-Mail Address Website DfE Number	School Type - Age Range - Supplement Information Form (SIF) (If yes see Appendix 1)	Expected number on roll September 2020	Published Admission Number 2021/22	Number of preferences expressed before the deadline for September 2020	Number of places offered at allocation date (2 March 2020) for September 2020	How places were allocated for September 2020 (see the school's oversubscription criteria for details)	Criteria and distance (in metres) of the last place offered at allocation (16 April 2020) for oversubscribed schools
<b>Worthing St Oscar Romero Catholic School</b> (Previously known as Chatsmore Catholic High School) Mr P Byrne Goring Street Worthing BN12 5AF (01903) 241368 <a href="mailto:office@stromeros.co.uk">office@stromeros.co.uk</a> <a href="http://www.stromeros.co.uk">www.stromeros.co.uk</a> 4603	Voluntary Aided  11 – 16  Yes SIF	803	180	248	184	See Appendix 1	See Appendix 1
<b>Worthing Worthing High School</b> Mr P Panayiotou South Farm Road, Worthing, BN14 7AR (01903) 237864 <a href="mailto:office@worthinghigh.net">office@worthinghigh.net</a> <a href="http://www.worthinghigh.net">www.worthinghigh.net</a> 4110	Academy  11 – 16  No SIF	1074	210	348	212	See Appendix 1	See Appendix 1

## West Sussex County Council Oversubscription Criteria

These are the criteria that apply to the majority of community and voluntary controlled schools:

- The tie-break used is a straight line distance. (Where the tie-break produces two or more equal distances the deadlock is broken by random allocation.)
- All distances are measured by a straight line from the school to the child's home address, using Ordnance Survey data within the curtilage of the property.
- Where priority is given for a sibling, brothers or sisters may be half or step-siblings (by marriage or co-habitation) or foster siblings but must be living permanently at the same address.
- West Sussex County Council only gives sibling priority if the sibling will be in the school at the time of application and will still be in the school at the time of admission i.e. in years 8 –11 in September 2021.
- Attendance at a sixth form will not be taken into account. This applies to all community and voluntary controlled schools.
- Siblings of children who have been refused a place at their catchment school because the school was oversubscribed at the point of application\* will be treated as living in the catchment area for the allocated school when they apply for secondary transfer.  
\*This will only apply if an application was made for the catchment school and the place refused in writing. Please note that it is the parent's responsibility to indicate these circumstances when applying for the younger sibling's school place.

Any child with an Education Health and Care Plan naming the school will automatically be admitted to that school, under Section 43 of the Families Act 2014.

1. Looked after children (children in public care) and children who were previously looked after who leave care under a special guardianship, residence, child arrangement or adoption order. See page 8 for more information. Evidence must be provided.
2. Children who are subject to a special guardianship order who have not previously been in local authority care. Evidence must be provided.
3. Children who need a place at the school on exceptional and compelling social, psychological or medical grounds. See page 8 for more information. Evidence must be provided.
4. Children who live in the catchment area with brothers or sisters already attending the school and who will still be there when the child starts.
5. Other children who live in the catchment area.
6. Children who live outside the catchment area with brothers or sisters already attending the school and who will still be there when the child starts.
7. Children of staff in either or both of the following circumstances: where the member of staff has been employed at the school for two or more years at the time which the admission to the school is made; and/or the member of staff is recruited to fill a vacant post for which there is a demonstrable skill shortage.
8. Other children who live outside the catchment area.

## Variations to West Sussex County Council's Oversubscription Criteria

### Horsham

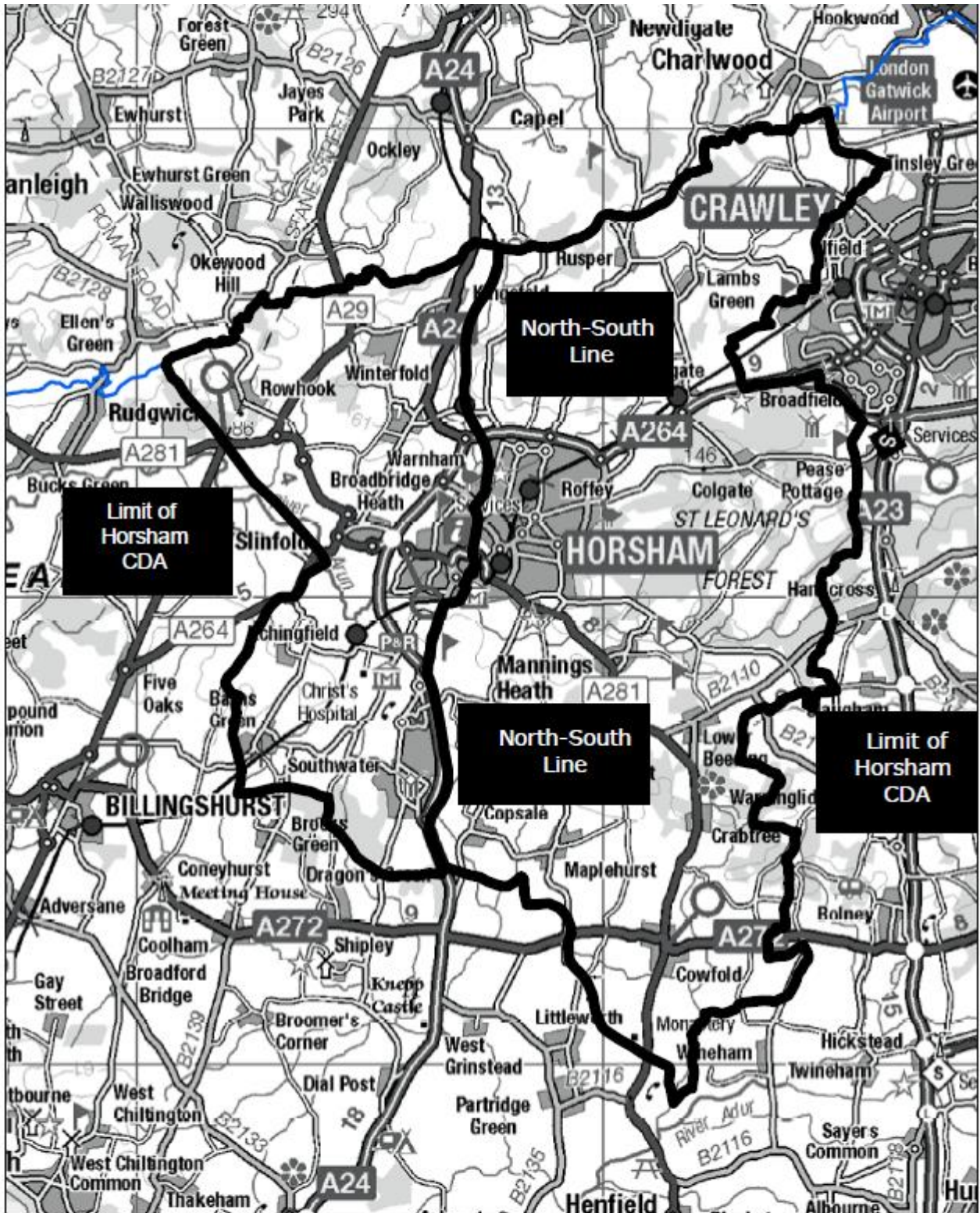
#### Transfer to secondary schools in the Horsham Community Designated Area

There are four schools in the Horsham Community Designated Area. The oversubscription criteria for the three Community schools, Tanbridge House School (co-educational), The Forest School and Millais School (girls), differ from those for the other Community schools in the county. Bohunt School Horsham is a Free school and has its own oversubscription criteria. The oversubscription criteria for all four schools can be seen in Appendix 1.

The Forest School and Millais School share a catchment area. Children living east of the north-south line are in the catchment area for The Forest School or Millais School. Children living west of the north-south line are in the catchment area for Tanbridge House School. The maps in this booklet showing the Horsham Community Designated Area and the north-south line are for illustration purposes only. Parents can check at [www.westsussex.gov.uk/admissions](http://www.westsussex.gov.uk/admissions) which school's catchment area they live.

Please note that The Forest School and Millais School (girls) are not linked for sibling purposes. That is having a brother at The Forest School does not give sibling priority for a sister applying for Millais School and visa versa.

## Map of the Horsham Community Designated Area (HCDA)



<p>Reproduced from or based upon 2009 Ordnance Survey mapping with permission of the Controller of HMSO © Crown Copyright reserved. Unauthorised reproduction infringes Crown copyright and may lead to prosecution or civil proceedings West Sussex County Council Licence No. 100023447</p>	<p>Horsham Designated Area</p>	<p>N 1:108,713</p>
---	--------------------------------	------------------------



Reproduced from or based upon the 2000 Ordnance Survey mapping with the permission of the Controller of HMSO © Crown Copyright reserved. Unauthorised reproduction infringes Crown Copyright and may lead to prosecution or civil proceedings. West Sussex County Council Licence No. LA076902.

North/South Line

Education Department



1:29756

## Steyning Grammar School

The Published Admission Number (PAN) for Steyning Grammar School is 390. This is the total number of pupils within the capacity of both sites of the school, with 180 pupils on the Rock Road (Storrington) Site and 210 pupils on the Steyning Site. **Applications are made for the school, not a specific site and parents should note that their child may not be allocated a place at the closest site to their home address, as per the site allocation criteria.**

### **How places are allocated at Steyning Grammar School**

Places at Steyning Grammar School will be allocated in accordance with the West Sussex Community and Voluntary Controlled schools criteria shown above.

**Siblings are given priority as shown in the oversubscription criteria above for entry to the school; however this does not guarantee allocation to the same site** (see process for site allocation in next section).

For the tie-break for in catchment pupils the measurement will be taken from the site serving the pupil's home address – i.e. distances to addresses in the part of the Steyning Grammar School catchment area served by the Rock Road (Storrington) site will be measured to that site. Distances to addresses in the part of the Steyning Grammar School catchment area served by the Steyning site will be measured to that site. For out of catchment pupils, measurements will be taken for both sites and the distance to the nearest of the two sites will be used.

### **How the site offer is determined for those allocated places at Steyning Grammar School –**

The catchment area for Steyning Grammar School is divided into two as there are two sites that cater for the Year 7 intake and year 8. From year 9, all children will progress to the Steyning Grammar Shooting Field (Steyning) site. Each pupil's site allocation will be processed as per the oversubscription criteria above, with criteria 1 pupils allocated their site first, then criteria 2 and so on.

#### **Children living within the catchment area**

Children who live in the Rock Road (Storrington) site part of the catchment area will be allocated the Rock Road (Storrington) site. Children who live in the Steyning site part of the catchment area will be allocated the Steyning site. Please refer to the map below for these areas. It is worth noting that for some areas, the home address may be closest to a particular site in distance but actually fall within the catchment area for the other site.

#### **Children living outside the catchment area**

The measurement will be taken from the site nearest to the pupils address. However, this does not determine the site that is offered. Successful applicants that are resident outside the catchment area for Steyning Grammar School may be allocated a place at **either** site, subject to capacity in each site. Where possible, pupils will be offered a place at the nearest site to their home address. However, if there are other children in the category that live nearer in straight line distance to the site (up to the maximum number for that site), this may not be possible and in that case a place will be offered at the site further away.

**Before applying for a school place at Steyning Grammar School, please ensure you have considered the possibility that the further site may be allocated to you.** There is no provision for parents to state a preference for the site. In addition there is no right of appeal if the preference is for the alternative site to the one the child has been allocated and there is no waiting list in respect of site allocation. **The Pupil Admissions Team cannot facilitate any internal site/site moves.**

Parents should note that there is no guarantee that future places for brothers or sisters will be offered at the same site. Allocations will be made as per the oversubscription criteria in each secondary transfer round.

### Offers from the waiting list

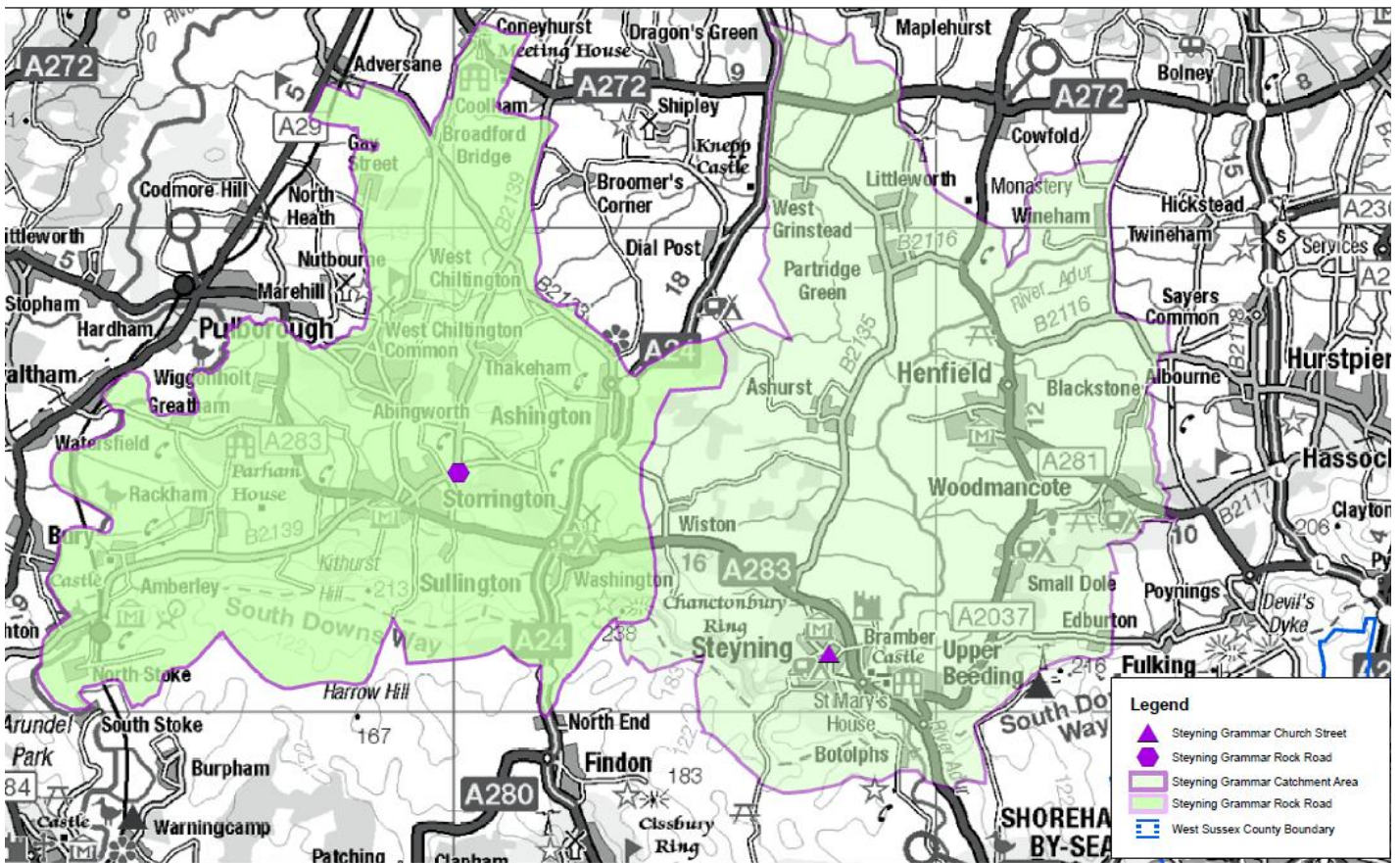
Pupils refused a place at Steyning Grammar School will be automatically added to a waiting list. If a place becomes available, the place will be offered for the site where the space is. If an offered place is refused because it is not the preferred site, the child's name will be removed from the waiting list and any appeal lodged will be cancelled. It is not possible to remain on the waiting list to wait for a place at the other site.

### Map of Steyning Grammar School Catchment Area

This applies to the Year 7 and Year 8 groups. From Year 9 the catchment is the entire area.

The left hand side with the purple hexagon shows the Rock Road (Storrington) part of the Steyning Grammar School catchment area and the Rock Road (Storrington) Site. Pupil's resident within this area will be allocated places at Rock Road (Storrington).

The right hand side and the purple triangle shows the Steyning part of the Steyning Grammar School catchment area and the Steyning Site. Pupil's resident within this area will be allocated places at Steyning.



Reproduced from or based upon 2009 Ordnance Survey mapping with permission of the Controller of HMSO © Crown Copyright reserved. Unauthorised reproduction infringes Crown copyright and may lead to prosecution or civil proceedings West Sussex County Council Licence No. 100023447

### Steyning Grammar Catchment Area

1:108,376



## Worthing

### Transfer to secondary schools in the Borough of Worthing

Responsibility for admissions to Davison CE (voluntary controlled) High School for Girls rests with West Sussex County Council. Parents wishing to apply to Davison CE (voluntary controlled) High School for Girls on denominational grounds should complete the Supplementary Information Form (SIF), available in Appendix 1 of this booklet, on the school's website or from the school, to confirm their church attendance and return it to the Pupil Admissions Team by 31 October 2020. The oversubscription criteria for Davison CE (voluntary controlled) High School for Girls are shown in Appendix 1, along with last year's allocation statistics and the criteria and distance of the last place offered.

### Church Voluntary Aided Schools, Foundation Schools, Free Schools and Academies

Church Voluntary Aided Schools, Foundation Schools, Free Schools and Academies are 'own admission authority schools', responsible for determining their own admission arrangements. The oversubscription criteria for church aided and foundation schools and academies in West Sussex are available in Appendix 1 of this booklet, on the schools' websites or from the schools. Where a school was oversubscribed in September 2020 the allocation statistics are shown in Appendix 1, beside the oversubscription criteria, along with the criteria and distance of the last place offered.

Parents wishing to express a preference for any of these schools are strongly advised to view the school's full admission policy and supporting notes, including definitions, available on the school's website. Many of these schools will also use a Supplementary Information Form (SIF), further information can be found in the table showing school information on pages 17 to 25 and on page 45.

Unless stated otherwise in the school's admission policy:

- The tie-break used is a straight line distance.
- All distances are measured by a straight line from the school to the child's home address, using Ordnance Survey data within the curtilage of the property.
- Brothers or sisters may be half or step-siblings (by marriage or co-habitation), or foster siblings but must be living permanently at the same address.
- Applications received after the application deadline will be considered after all the preferences received on time.
- Children with an Education Health and Care Plan naming a school will automatically be admitted under Section 43 of the Families Act 2014.
- Looked after children (children in public care), children who were previously looked after and are adopted, and children who leave care under a special guardianship, residence or child arrangement order are given priority. See page 8 for more information - evidence must be provided.

## TRANSPORT TO SCHOOL

### WEST SUSSEX HOME TO SCHOOL AND COLLEGE TRANSPORT POLICIES

#### Introduction

Free transport, or assistance with the cost of travel to school, may be offered by the Local Authority according to which school your child attends and the distance involved.

**Please note that the school transport policy and school transport arrangements are subject to review from time to time.**

The full Home to School Transport Policy is available at [www.westsussex.gov.uk/schooltransport](http://www.westsussex.gov.uk/schooltransport) along with further information about school transport. The policy is summarised below.

Where help with travel is agreed, it will be by one or more of the following, as appropriate:

- a) a free place on a contract or school bus;
- b) a rail or bus season ticket;
- c) a fuel allowance where travel by car is agreed;
- d) by taxi, in exceptional cases only, usually for children with severe disabilities; or
- e) a contribution towards the cost of travel.

The arrangements for transport to the secondary schools in Horsham and Worthing are slightly different. Please see below or contact the Transport Bureau.

#### Travel to the Catchment Area School or Nearest School

If your child attends the catchment school for your area, free travel will be available if they live three miles or more from the school, measured by the shortest available walking route.

Assistance will also be available where the school attended is not the catchment school but is the nearest suitable state-funded school to the home, provided the relevant walking distance test is met. All secondary schools for which the Council can arrange admission are viewed as suitable, which includes Academies, Free Schools and faith-based schools. The term 'nearest' is used in this document to mean 'nearest suitable'. There is further information about transport and Educational Health & Care Plans (EHCPs) below.

It is the parent's responsibility to decide if it is necessary to accompany their child on the journey to school. In exceptional circumstances assistance with travel may be given where the walking route between the home and the school is regarded by the Local Authority as too hazardous for the child to walk, even if they are accompanied by an adult.

#### Preference and Transport

Where a child attends a school which is not the nearest suitable or County Council catchment school on the grounds of parental preference, the parents are usually responsible for making their own transport arrangements and for all transport costs. The nature of the walking route is not taken into account where such a preference is made.

Parent/carers are able to express up to three preferences for schools in the admissions process. If preferences for schools are made in distance order, nearest first, then transport assistance would be available to whichever school is allocated as part of the admissions round. This is because the school offered will automatically be the *nearest available* school.

Parents should apply to the Transport Bureau if they believe their child will be eligible for assistance because their nearest school was full.

### **Travel to the Horsham Secondary Schools**

The policy is as set out above except that, where reference is made to 'catchment school', it is necessary to refer to the relevant school within your part of the Horsham Community Designated Area, as divided by the north-south line.

Pupils living west of the north-south line within the Horsham Community Designated Area will receive free school transport to either Tanbridge House, Millais or Forest schools, if their homes are three miles or more by the shortest walking route from the school attended. Pupils living east of the line are eligible only for free travel to Millais or The Forest schools. Pupils will receive free school transport to Bohunt Horsham only if it is their nearest available school.

### **Travel to Worthing High Schools**

The arrangements for assistance with travel for children living in Worthing are as set out above; except that assistance is only given to the nearest suitable school within the area.

### **Children from Families with a Low Income**

Help is available to children from families on a low income where:

- The child is eligible for free school meals or the family receives working tax credit at the maximum level for the case and;
- The school attended is one of the three nearest suitable schools to the child's home (including Academies, Free Schools and faith-based schools) and;
- The home to school walking distance is two miles or more, measured by the shortest available walking route and;
- The school attended is less than six miles from the child's home, measured by the shortest road route.

Help is available for children from families on a low income, as specified above, where a child attends a school for reasons of religion or belief which is two miles or more, measured by the shortest available walking route and not more than 15 miles from the child's home, measured by the shortest road route, subject to there being no suitable alternative school nearer to the child's home. Evidence to support grounds of religion or belief will be required and the Authority will be guided by the Equality Act 2006 with regard to definitions.

In these circumstances, evidence to support a financial assessment will be required at the time of application. Assistance will continue for the duration of the school year. A fresh application must be made each year to confirm that the eligibility criteria are still met.

### **Travel to Church Schools on Denominational Grounds**

Assistance with transport is not available to children attending church voluntary aided schools with the exception of those who qualify on low income grounds and those for whom the school is the nearest suitable school to their home address.

### **Travel to Special Schools and Special Support Centres**

A child with an Education, Health and Care Plan (EHCP) is usually treated no differently from a child without an EHCP and the usual policy, as above, applies with regard to distance between home and the nearest suitable school. If your child attends the catchment special school or a catchment secondary school with special support centre for the area in which you live and the Local Authority considers that transport is necessary because of an individual's specific needs or disabilities, regardless of the distance from home to school, it will be provided free of charge. There is an expectation for children and young people to travel to and from school or college independently (including using public transport), where possible. Taxis are provided only in exceptional cases. Children and young people's needs are reviewed and transport may not be provided for the whole of a child's school education.

More details are available in a leaflet 'Guidance Notes for Parents' or the SEN Transport Policy statement obtainable from the **Special Educational Needs Assessment Team, County Hall, Chichester PO19 1RFG**.

### **Travel to school in another Local Authority's Area**

If you live in West Sussex but your child attends a school maintained by another Local Authority, you will not normally get help unless it is over the qualifying distance **and**

- a) it is the nearest suitable school to your home; or
- b) you move home (see below).

### **Travel to Sixth Form**

Details of the policy in respect of travel to sixth forms, sixth form colleges and colleges of further education, can be obtained from the [www.westsussex.gov.uk/post-16transport](http://www.westsussex.gov.uk/post-16transport) You can email the Student Support Office at [Post16Transport@westsussex.gov.uk](mailto:Post16Transport@westsussex.gov.uk) or 033 022 23588.

### **Moving House – Transport Implications**

If your child attends the nearest suitable or catchment school and you move house, you may receive help subject to reasonable costs if:

- a) your child is in year 10 or 11 and
- b) your new address is within West Sussex and your child continues to attend the same school and has been following, for at least one complete term, a course leading to a public examination (assistance will be for the duration of the course only); **and**
- c) the journey can be considered reasonable for the student.

### **Concessionary Travel**

If your child is not eligible for assistance they may be able to travel if there is an appropriate contract bus, or taxi which has spare places. A charge towards travel costs is required for such places. Places are given as a concession and may have to be withdrawn at short notice if required for pupils who have an entitlement, or if the vehicle is no longer needed or if a smaller vehicle is used or in cases of poor behaviour. In such circumstances you would have to make your own alternative transport arrangements.

Concessionary seats are given for a maximum of one school year at a time and a new application must be made annually. If there are more applications than seats available, the following order of priority will be used:

- a) children attending the nearest suitable or catchment school - those living furthest away having highest priority;
- b) children attending an alternative school - those living nearest to the school attended having the highest priority.

If a concessionary seat is given it will not be withdrawn during a school year in favour of a child who has higher priority.

For those students attending the sixth form of the nearest suitable or catchment school and who live more than three miles from the school, the concessionary place, once offered, will not be withdrawn where there is no alternative public transport available.

The annual charge will be payable either by direct debit instalments between October and April or two termly instalments at the beginning of the autumn and spring terms. No refund will be offered for the summer term.

Details and the application form are at [www.westsussex.gov.uk/schooltransport](http://www.westsussex.gov.uk/schooltransport)

## Behaviour

All pupils and students are expected to abide by the codes of conduct and behaviour issued by the Local Authority and the school that a child attends or the transport operator. For further information, please visit [www.westsussex.gov.uk/schooltransport](http://www.westsussex.gov.uk/schooltransport)

## Contact details

You can contact the **Transport Bureau** at [school.transport@westsussex.gov.uk](mailto:school.transport@westsussex.gov.uk) or (01243 753530)

## Errors or revisions

In the event of an error being made, transport will be withdrawn following a period of notice of not less than one half term.

## If you are unhappy with a Transport Decision

If you are not satisfied with a decision about your entitlement to free transport or assistance, you should contact the Transport Bureau (mainstream school pupils), Planning Co-ordinator (pupils placed by the Special Educational Needs Assessment Team) or Student Support (Post-16 students) to discuss the matter. If you feel there are special circumstances you may appeal to the Director of Education and Skills for the case to be reconsidered. In exceptional circumstances, the case may be referred to an appeal panel of elected members.

## West Sussex Sustainable Modes of Travel Strategy

### Introduction

The Education and Inspections Act 2006 requires local authorities to publish a Sustainable Modes of Travel Strategy to promote the use of sustainable travel to and from school and between school establishments.

### Aims of the Strategy

The Education and Inspections Act 2006 extends local authorities' duties to support choice through provision of transport and transport arrangements, including provision of free transport for the most disadvantaged families.

The strategy supports this by building on existing strategies, plans and policies adopted by the Local Authority. Through the implementation of the strategy the Local Authority will:

- Help to improve travel planning to schools and colleges
- Improve accessibility to schools and colleges
- Improve road safety and healthy lifestyles for children
- Continue to build on reduction of car use for school journeys
- Improve safety at school gates by discouraging illegal and inconsiderate parking behaviours at drop-off and pick-up times
- Increase walking, cycling and using public transport to and from school
- Encourage independent travel for children and students with special educational needs.

### The Strategy

The strategy complements the West Sussex Transport Plan 2011-26 and draws from the Local Authority's other plans and strategies including:

- Safer Routes to School delivery programme
- School Travel Plan programme (including behavioural change activities)

- Road Safety Framework 2016-2026
- Walking and Cycling Strategy 2016-26
- West Sussex Bus Strategy 2018-26
- Home to School and College transport policies which are summarised in the Information for Parents Booklet and also available on the council's website (see links below).

### **School Travel Plans**

Through the School Travel Plan Programme, the Local Authority is working alongside schools to enable schools to develop and maintain an accredited Travel Plan. Travel Plans are accredited through ModeShift Stars. School Travel Plans include advice for parents about existing travel to school and plans for improvement. They should measure and monitor the journey to and from school to help plan for future travel needs. School Travel Plans are available either through the schools' websites or by contacting schools direct.

### **Walking to school**

Through the development of the Walking and Cycling Strategy 2016-26, walking buses, the Safer Routes to School programme and other walking initiatives (e.g. walk to school week), the Local Authority supports and encourages walking to school, not only to reduce car usage but to improve both the health of children and the environment locally.

### **Cycling**

Through its Walking and Cycling Strategy 2016-26, the Local Authority is committed to promoting cycling as normal and acceptable behaviour including for travelling to and from school or college. As well as local information in some school travel plans, advice on cycling in West Sussex can be found on the County Council's website. The website also links to the West Sussex Cycle Journey Planner (see the table below for links.)

Schools will have their own cycling policies and will also be able to advise on the facilities that they can offer, such as cycle racks and storage.

### **Public Transport**

The Local Authority is committed to promoting the use of public transport. Information about rail and bus timetables, fares and travel planning can be found through the links and contact points in the table below.

Students who attend full-time courses at sixth forms, sixth form colleges or colleges of further education can also get 50% off rail tickets (including season tickets) using the 16-17 Saver, a national scheme supported by the Department for Transport. This replaces the Sussex Student Card.

The Local Authority works actively alongside bus operators to review existing and implement new bus infrastructure.

### **Help with Home to School and College transport**

In the majority of cases, parents are responsible for their children's travel and costs. Some children and young people may be entitled to help with transport, depending on the school or college they attend and the distance between home and school. Individual circumstances may also be taken into account e.g. where a child or young person has special educational needs or where the family is on low income.

Further information about help with transport to and from school or college can be found on the school transport section of the council's website. Additional information for students attending sixth forms, sixth form colleges or colleges of further education can be found in the Post-16 Transport Policy Statement and its appendices published annually on the website.

## Independent Travel Training

The County Council is committed to the principles of inclusion and independent living for children and young people with special needs and disabilities. The ability to travel independently is an important part of preparing children and young people for adulthood. Whilst for some it will be difficult, many parents can help by using public transport with their children as much as possible so that they get used to it as a normal mode of travel. Parents can help by training their children to use public transport independently as they get older. Schools and colleges also help by offering independent travel training to help children and young people achieve independent living outcomes in their Education, Health and Care Plan. Wherever possible, there is an expectation for children and young people to travel to and from school or college independently.

### Useful documents, websites and contact numbers:

	Website	Contact or further information
Cycling	<a href="http://www.westsussex.gov.uk/cycling">www.westsussex.gov.uk/cycling</a>	01243 642105
School Travel Plans	Contact individual schools direct	Contact individual schools direct
School Crossing Patrols	<a href="http://www.westsussex.gov.uk/schooltransport">www.westsussex.gov.uk/schooltransport</a>	Contact individual schools direct or School Crossing Patrol Service on 01243 642105
Home to school and college transport policies	<a href="http://www.westsussex.gov.uk/schooltransport">www.westsussex.gov.uk/schooltransport</a>	<a href="mailto:school.transport@westsussex.gov.uk">school.transport@westsussex.gov.uk</a>
Travel planning including bus timetables and fares	<a href="http://www.travelinesoutheast.org.uk">www.travelinesoutheast.org.uk</a> <a href="http://www.westsussex.gov.uk/buses">www.westsussex.gov.uk/buses</a> <a href="http://www.travelwestsussex.co.uk">www.travelwestsussex.co.uk</a>	0871 200 2233
Rail timetables and fares	<a href="http://www.nationalrail.co.uk">www.nationalrail.co.uk</a>	08457 48 49 50
16-17 Saver rail discount scheme	<a href="http://www.16-17saver.co.uk">www.16-17saver.co.uk</a>	
Safer Routes to School and Travel Planning	<a href="http://www.westsussex.gov.uk">www.westsussex.gov.uk</a>	<a href="mailto:srts.team@westsussex.gov.uk">srts.team@westsussex.gov.uk</a>
Bus Infrastructure improvements	<a href="http://www.westsussex.gov.uk">www.westsussex.gov.uk</a>	<a href="mailto:bus.stops@westsussex.gov.uk">bus.stops@westsussex.gov.uk</a>

## In-year applications to join an established year group

An in-year admission is the admission of a pupil to a school which takes place outside of the normal admission round. This includes pupils changing schools, pupils coming from a different country or from other parts of the UK, pupils returning to a school from living elsewhere or those who have not been in school. If a child is coming from abroad to the UK for the first time then the child must be in the country when you apply. However, if the child has previously lived in the UK, **and** you can prove that you are returning to a property which you own or rent in West Sussex, then you can apply in advance of the child arriving in the country. If in doubt please contact the Pupil Admissions Team for advice.

If you are thinking of changing schools because your child is not getting on at their current school then you should always discuss your reasons for the move with the current school. If you remove your child from school and home educate for less than six months your child will be expected to return to their previous school if there is space available. In-year applications will only be considered under the exceptional and compelling criteria at the time of the original application, unless there is an unforeseeable change of circumstance after the application was made. Therefore, supporting evidence from an independent professional (see page 8 above) must be submitted with the original application.

Details of how to make an in-year application, which form to use and where to send it can be found at [www.westsussex.gov.uk/admissions](http://www.westsussex.gov.uk/admissions), or you can telephone 03330 142 903 for advice and an application form. Online applications made at a weekend are treated as being received on the next working day. In-year applications for schools outside West Sussex should be made direct to that school or Local Authority.

Where West Sussex County Council processes applications, either as the Admissions Authority for the school or on behalf of the Admission Authority of an own admission authority school, we aim to do so within ten school days of receipt, although this can be longer at busy times or if required information is delayed or complex. We can only offer a place if there are spaces in that year group and places for established year groups cannot be reserved in advance. You can make an in-year application at any time and places normally have to be taken up within 10 school days. The exception is that in-year applications for September entry (apart from the intake year) can be made from 20 May and will be processed as if received on 1 June. In-year applications for September received on or before 19 May will be returned to the applicant and must be resubmitted on or after 20 May. Where preferences cannot be met parents will be advised of how to go on the waiting list and their right of appeal.

Where West Sussex County Council does not process In Year applications on behalf of the admission authority of an own admission authority school, you need to contact the school direct. It should be noted that schools that require completion of a Supplementary Information Form (SIF), for example church voluntary aided schools or academies with a religious character, will also need this for an In Year application.

Special rules apply to in-year applications for the following groups of children:

**Service Personnel** - West Sussex County Council is committed, in accordance with The Armed Forces Covenant, to ensuring that members of the Armed Forces Community suffer no disadvantage in accessing public services. Members of the armed forces with automatic right of entry to the UK who are able to provide evidence of their relocation may apply for a school place ahead of a move. An application can be made as soon as confirmation of the relocation is available, with no restriction on how far in advance the application can be made. Armed forces applications must be supported by an official letter that declares a relocation date and a Unit postal address or quartering area address and it is this address that will be used when considering the application. There is no guarantee that a place will be available at a preferred school; each application will be considered in line with the school's admissions criteria. Please note that only applications made from the Unit postal address or quartering area address can be processed in advance.

**Crown Servants** - Crown servants with automatic right of entry to the UK who are able to provide evidence of their relocation may apply for a school place ahead of a move. An application can be made as soon as confirmation of the relocation is available, with no restriction on how far in advance the application can be

made. For crown servants a United Kingdom address can only be used if there is evidence of the address the child is returning to. There is no guarantee that a place will be available at a preferred school; each application will be considered in line with the school's admissions criteria.

**Vulnerable Children** – In accordance with the School Admissions Code, a Fair Access Protocol exists to ensure that un-placed children, especially the most vulnerable, for example children who are homeless or children who are carers, are offered a place at a suitable school as quickly as possible. You will be contacted after you have returned an application form if your application is to be processed under the Fair Access Protocol.

**Looked After Children and Previously Looked After Children** - It should be noted that the School Admissions Code 2014 differentiates between a looked after child and a previously looked after child. A local authority has the power to direct a maintained school to admit a looked after child, even when the school is full. This is not the case with a previously looked after child, although previously looked after children do receive priority under the oversubscription criteria.

## **University Technical Colleges (UTCs)**

University technical colleges specialize in subjects like engineering and construction and teach these subjects along with business skills and using IT. University technical colleges are sponsored by universities, employers and further education colleges.

Students can join a UTC at the beginning of year 10 or year 12.

West Sussex does not have any University Technical Colleges. However, parents living in the county may wish to apply for their child to transfer from year 9 to start year 10 at a UTC in another county.

There is one UTC near to West Sussex:

- UTC Portsmouth with a focus on electrical and mechanical engineering and advanced manufacturing. <http://www.utcportsmouth.org/>

If you are interested in this college you need to visit the website for details about their admission policies and how to apply.

## **Glossary – Explanation of words/phrases used in this booklet**

### **Academy**

Academies are independently managed schools. They are set up by sponsors from business, faith or voluntary groups in partnership with the Department for Education (DfE) and the Local Authority. Academies are run by their own academy trust, which sets the admissions criteria and makes admissions decisions.

### **Admission Authority**

The body that decides which children can attend a school, based on their Admission Policy. For community and voluntary controlled schools this is the Local Authority. For academies, church voluntary aided schools, foundation schools and free schools, it is the Governing Body or Academy Trust.

### **Back-classing**

The Department for Education expects pupils to be educated in their correct chronological year group. A back-classing arrangement is when a child who has already been in receipt of education repeats an academic year and is therefore educated outside of their chronological year group. This is an exceptional arrangement and applications must be supported by the current or most recent school.

### **Catchment School**

The school(s) that serves a specific area or address.

### **Church Voluntary Aided School**

Church voluntary aided schools are schools with a religious character which are run by their own Governing Body, which sets the admissions criteria and makes admissions decisions. They are maintained by the Local Authority but the governing body contributes to building and maintenance costs.

### **Community School**

A community school is one which is funded and run by the Local Authority, who set the admissions criteria and makes decisions. The school is maintained by the Local Authority.

### **Co-ordinated Admissions**

During the 'Normal Admissions Round' Local Authorities are required to co-ordinate admissions for all pupils in an area. This means that every parent of a child living in West Sussex who has

applied for a school place receives an offer of only one school place.

### **Education, Health and Care Plan**

Replaced a Statement of Special Educational Needs (see below) from 1 September 2014.

### **Fair Access Protocol**

The Fair Access Protocol is a requirement of the School Admissions Code to ensure that – outside the normal admissions round - unplaced children, especially the most vulnerable, are offered a place at a suitable school as quickly as possible. The operation of the Fair Access Protocol is triggered when a parent of an eligible child has not secured a school place under in-year admission procedures.

### **Foundation (including trust) School**

A school where the Governing Body employs the school's staff and have a responsibility for admission arrangements. The school's land and buildings are owned by the Governing Body or by a charitable foundation or trust.

### **Free Schools**

Free schools are a type of Academy. They are set up by local people/groups. They are funded by the Department for Education (DfE). Free schools are run by their own governing body, which sets the admissions criteria and makes admissions decisions.

### **Independent School**

A school that charges fees and controls its own admissions, which are not co-ordinated by the Local Authority (also known as Private Schools).

### **In-Year Admissions**

In-year admissions are applications made on or after the first day of the school term of the admission year for a place in an established year group.

### **Local Authority**

The council responsible for co-ordinating admissions to schools in the area and for determining admission arrangements and managing admissions to community and voluntary controlled schools. In West Sussex this is West Sussex County Council.

### **Looked After Children**

A Looked After Child is a child who is registered as being in the care of the Local Authority or being provided with accommodation by the Local

Authority (under Section 22 of the Children's Act 1989).

### **Normal Admissions Round**

The period during which parents are invited to express three preferences for a place at any state-funded school, in rank order on the common application form provided. In West Sussex this period runs from when applications open on 7 September 2020 to our processing deadline of 27 November 2020. The deadline for on time parental applications is 31 October 2020. Applications received between 1 November 2020 and 27 November 2020 are out of time applications determined before the National Offer Day. Applications received between 28 November 2020 and 1 September 2021 are late applications outside the normal admissions round.

### **Number on Roll**

This is the total number of children at a school on a specific date.

### **Oversubscribed**

A school is oversubscribed when it has more applications than the number of places available (published admission number).

### **Preferences**

Parents have the right to state which three schools they would like their child to attend. However, there can be no guarantee that a place will be allocated at the preferred schools if they are oversubscribed.

### **Previously Looked After Children**

For school admission purposes a Previously Looked After Child is a child who was a Looked After Child but ceased to be so because they were adopted, or became subject to a Residence Order, Child Arrangements Order or Special Guardianship Order, immediately following having been looked after.

### **Private Fostering**

If you are caring for someone else's child for more than 28 days, you do not have parental responsibility for them and you are not a relative such as a grandparent, brother, sister, uncle or aunt (whether full blood, half blood or by marriage or civil partnership) or step-parent, you may be private fostering. It is a legal requirement that you contact West Sussex County Council on: 01403 229900 or email: [MASH@westsussex.gcsx.gov.uk](mailto:MASH@westsussex.gcsx.gov.uk)

### **Published Admission Number (PAN)**

This is the number of places available in each year group at a school, based on the actual accommodation at the school.

### **Religious Character**

Schools with a Religious Character are commonly known as 'faith' schools.

### **Sibling**

A brother or sister. School admissions policies should define exactly what this means. In community and controlled schools brothers and sisters can be half or step siblings (by marriage or cohabitation) or foster siblings sharing a common address. Cousins are not classed as siblings. For the purpose of secondary transfer to a community and controlled school, sibling priority can only be given where the older sibling is attending the school requested. Attendance at a sixth form attached to the school will not be taken into account. Some academies, church voluntary aided schools, free schools and foundation schools may take another approach and you should check the school's information.

### **Statement of Special Educational Need**

A formally recognised assessment of a child's additional needs. (N.B. Replaced by an Education, Health and Care Plan from 1 September 2014.)

### **Voluntary Controlled School**

Voluntary Controlled Schools are religious or 'faith' schools, but are run by the Local Authority, which sets the admissions criteria and makes admissions decisions. They are usually smaller village schools that have CE in their name.

## USEFUL CONTACT TELEPHONE NUMBERS

### Pupil Admissions Team (Northern Area)

County Hall North, Chart Way, Horsham,  
RH12 1XH  
Telephone: 03330 142 903  
Fax: 01403 276460  
Email: [admissions.north@westsussex.gov.uk](mailto:admissions.north@westsussex.gov.uk)

### Pupil Admissions Team (Southern Area)

Centenary House, Durrington Lane, Worthing,  
BN13 2QB  
Telephone: 03330 142 903  
Fax: 01903 839214  
Email: [admissions.south@westsussex.gov.uk](mailto:admissions.south@westsussex.gov.uk)

### Special Educational Needs Assessment Team:

Telephone numbers:  
0330 222 2516: Chichester, Bognor Regis,  
Midhurst, Petworth  
0330 222 3120: Angmering, Littlehampton,  
Steyning, Worthing, Shoreham, Lancing  
0330 222 2722: Crawley  
0330 222 3121: Burgess Hill, Horsham,  
Haywards Heath, Cuckfield, East Grinstead

### Pupil Entitlement Team - Investigations:

Telephone: 0330 222 8200 (8.30am to 1.30pm)

### Elective Home Education:

Telephone: 0330 222 3300

### Private Fostering Team

01403 229900  
or email: [MASH@westsussex.gcsx.gov.uk](mailto:MASH@westsussex.gcsx.gov.uk)

### Contact details for Diocesan Education Offices - Church of England Schools

Director, Diocesan Board of Education  
Diocese of Chichester  
211 New Church Road  
Hove, East Sussex BN3 4ED  
Telephone: 01273 421021

### Catholic Schools

Director of Education  
Diocese of Arundel and Brighton  
Education Service  
4 Southgate Drive  
Crawley, West Sussex  
RH10 6RD  
Telephone: 01293 511130

## Neighbouring Authorities

### East Sussex County Council

Admissions and Transport Team, County Hall, St  
Anne's Crescent, Lewes, East Sussex, BN7 1SG.  
Telephone: 0300 330 9472  
[www.eastsussex.gov.uk](http://www.eastsussex.gov.uk)

### Kent County Council

Admissions and Transport Team, Room 2.24,  
Sessions House, County Hall, Maidstone, Kent,  
ME14 1XQ.  
Telephone: 03000 412121  
[www.kent.gov.uk/schooladmissions](http://www.kent.gov.uk/schooladmissions)

### Surrey County Council

Admissions and Transport Team, Quadrant Court,  
35 Guildford Road, Woking, Surrey, GU22 7QQ  
Telephone: 0300 200 1004 [www.surreycc.gov.uk](http://www.surreycc.gov.uk)

### Brighton and Hove City Council

School Admissions Team  
Brighton and Hove City Council, Hove Town Hall  
Norton Road, Hove, BN3 3BQ.  
Telephone: 01273 293653  
[www.brighton-hove.gov.uk](http://www.brighton-hove.gov.uk)

### Hampshire County Council

County Admissions Team, Children's Services  
Department, The Castle, Winchester, Hampshire,  
SO23 8UG.  
Telephone: 0300 555 1377 [www.hants.gov.uk](http://www.hants.gov.uk)

### Portsmouth City Council

Admissions Service, Portsmouth City council,  
Civic Offices, Guildhall Square,  
Portsmouth, PO1 2EA  
Telephone: 023 9268 8008  
[www.portsmouth.gov.uk](http://www.portsmouth.gov.uk)

## West Sussex Admissions North and South areas



### Data Protection

The West Sussex County Council (WSCC) Pupil Entitlement Team use personal data in line with the West Sussex County Council Privacy Policy. WSCC respects your privacy and is committed to protecting your personal data. We comply with the Data Protection Act 2018 and the General Data Protection Regulations (EU 2016/679 (GDPR)). Please follow the link below to find out further information on how your information is used and details of your rights:

WSCC Privacy Policy <https://www.westsussex.gov.uk/privacy-policy/>.

A paper copy of the Privacy Notices, including the Privacy Notice for Pupil Entitlement, can be provided upon request.

This brochure relates to the school year starting September 2021 and is as accurate as possible. However, there may be changes during the year as a result of developments in central or local government policies, or at individual schools. Please check with the Pupil Admissions Team if you are unclear about anything.